

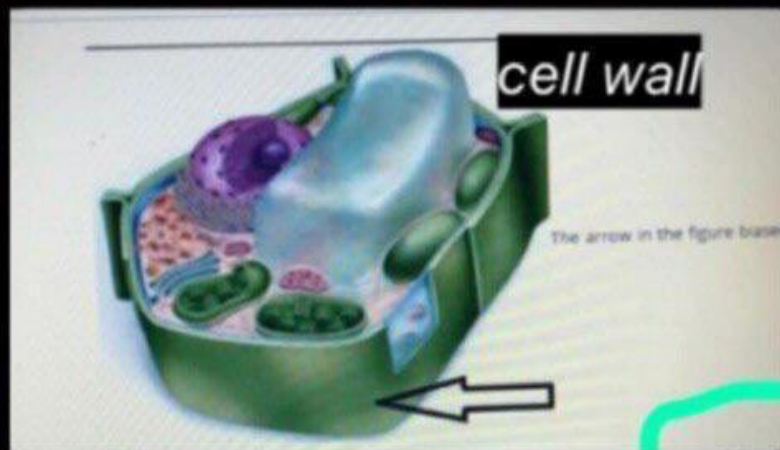
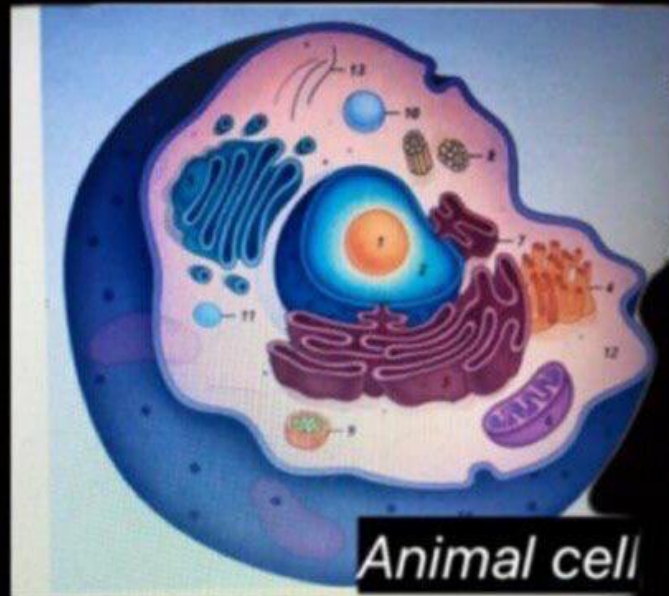
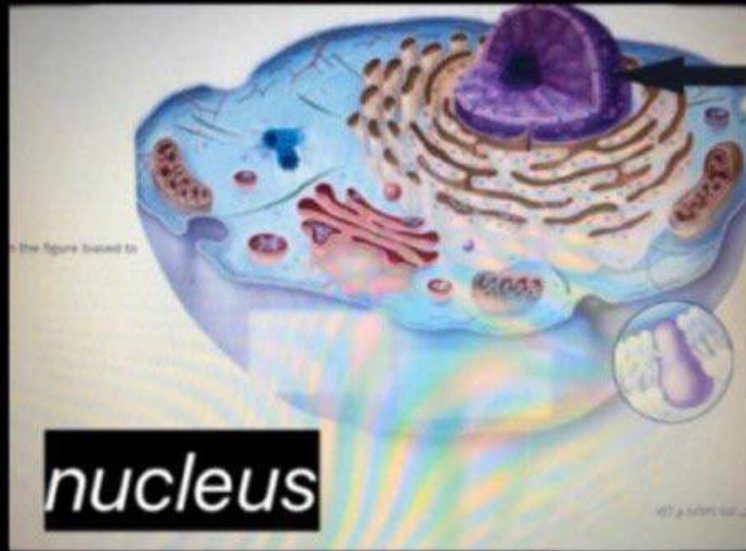


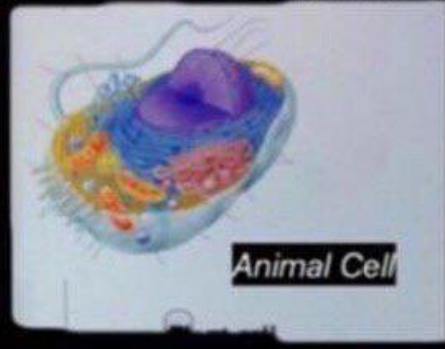
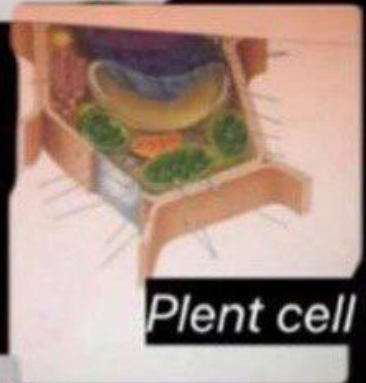
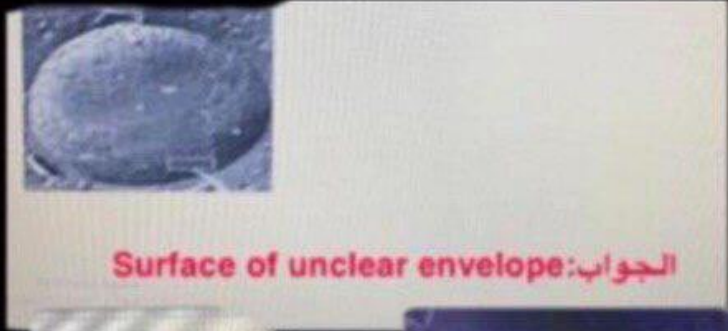
مدونة المناهج السعودية

<https://eduschool40.blog>

الموقع التعليمي لجميع المراحل الدراسية

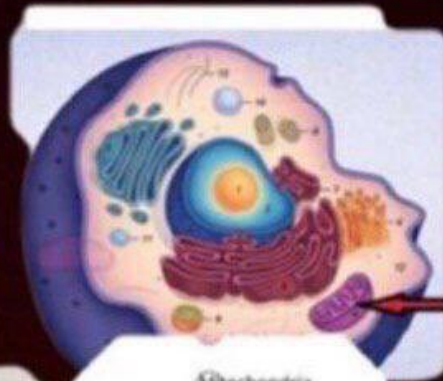
في المملكة العربية السعودية







bacterial cells: الجواب



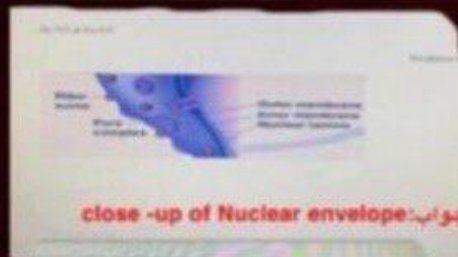
Mitochondria



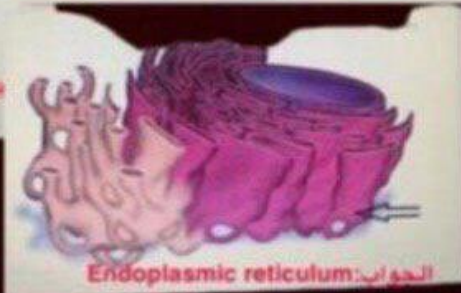
Archaea: واپ



plant cell: الجواب



close-up of Nuclear envelope: الجواب



Endoplasmic reticulum: الجواب



The Golgi Apparatus: الجواب

A thin section through bacterium.



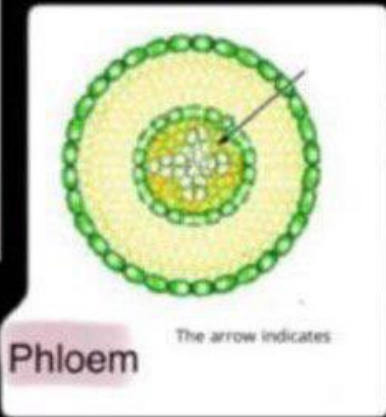
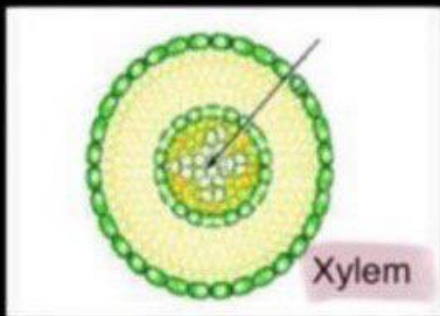
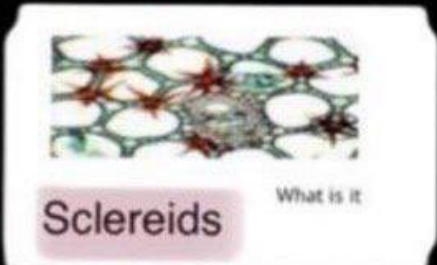
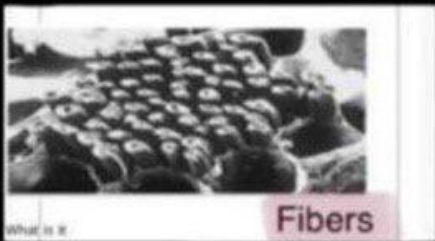
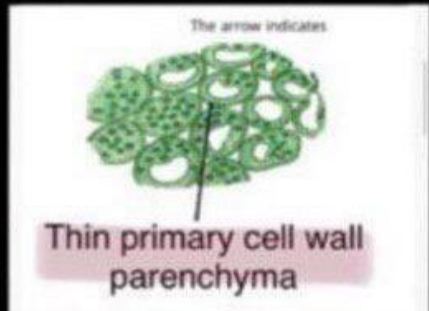
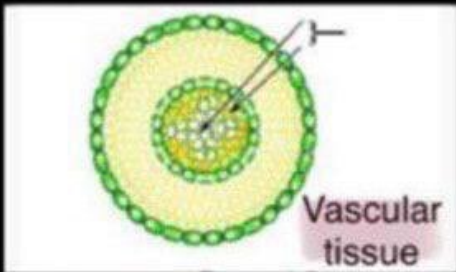
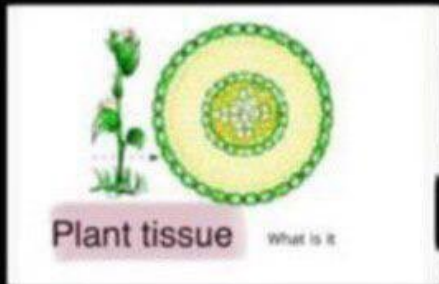
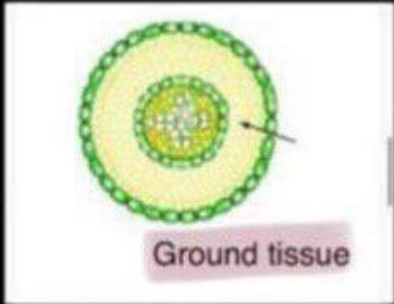
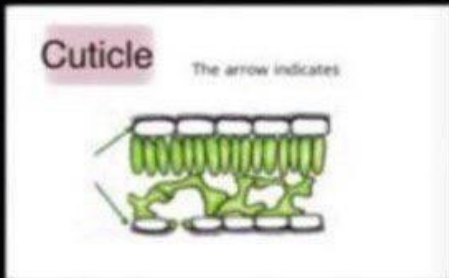
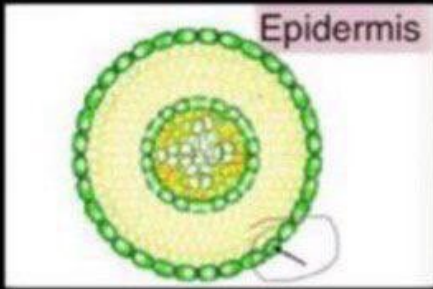
A typical rod-shaped bacterium



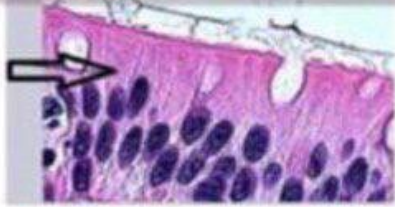
Nuclear envelope and endoplasmic reticulum



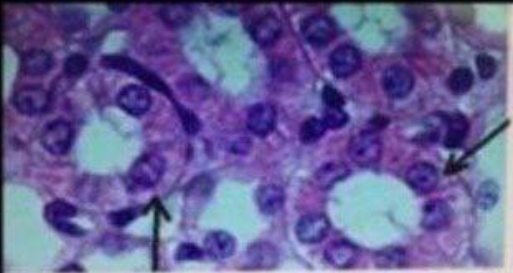
Chloroplast



Simple columnar cells

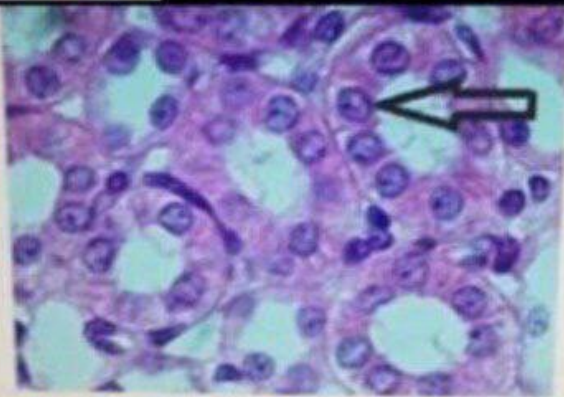


The arrow in the figure biased to
Basement membrane



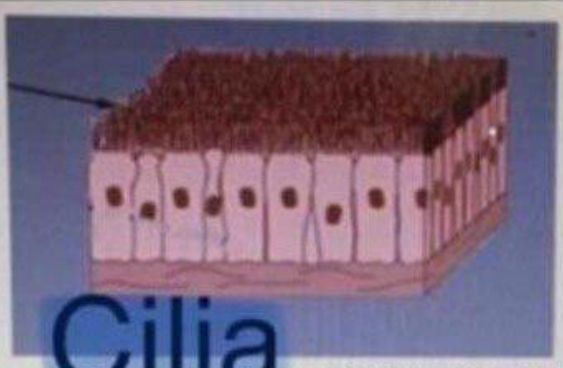
Simple cuboidal epithelium

..... this picture is
Striated muscle
Bone



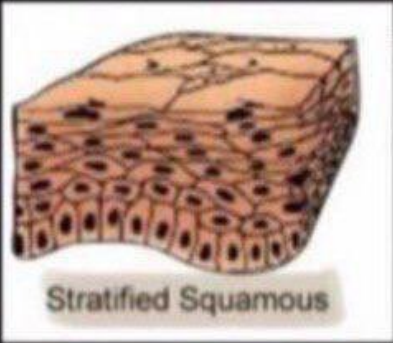
The arrow in the figure biased to

- Simple cuboidal cell
- Simple cuboidal cell

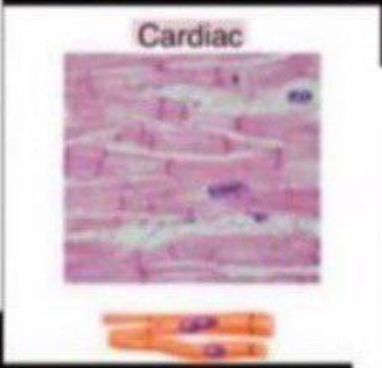


Cilia

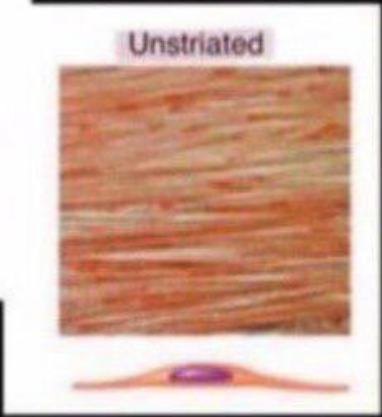
ow in the figure biased to



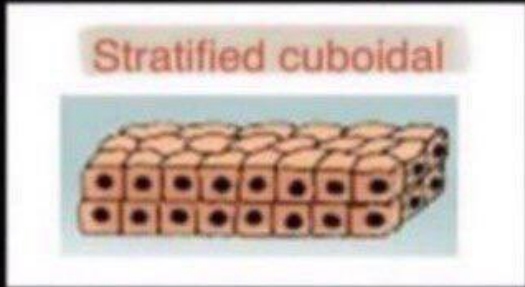
Stratified Squamous



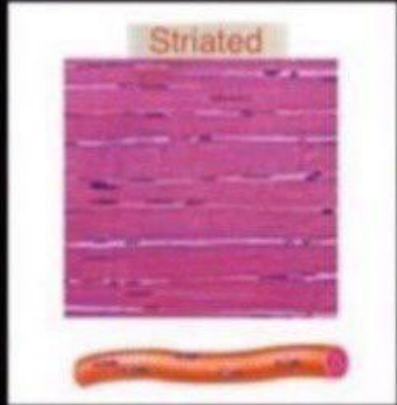
Cardiac



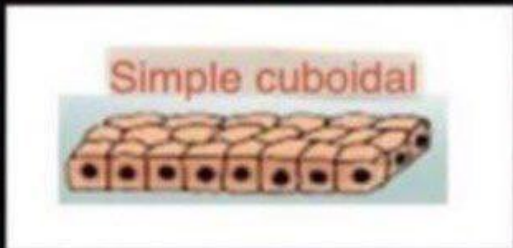
Unstriated



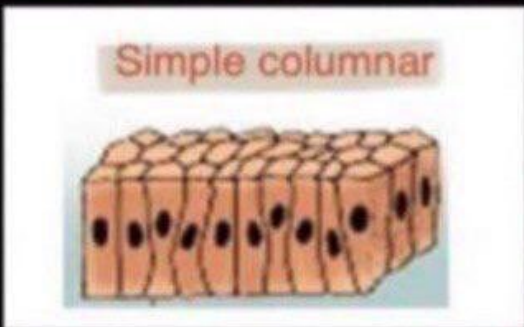
Stratified cuboidal



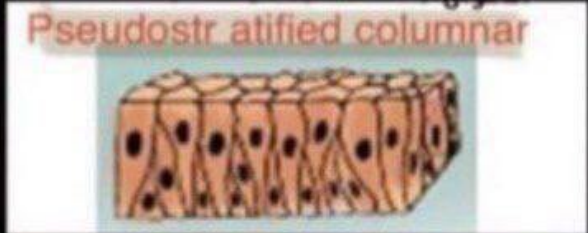
Striated



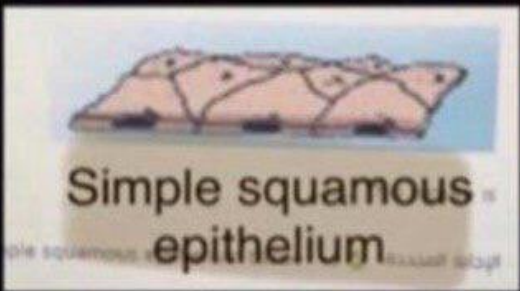
Simple cuboidal



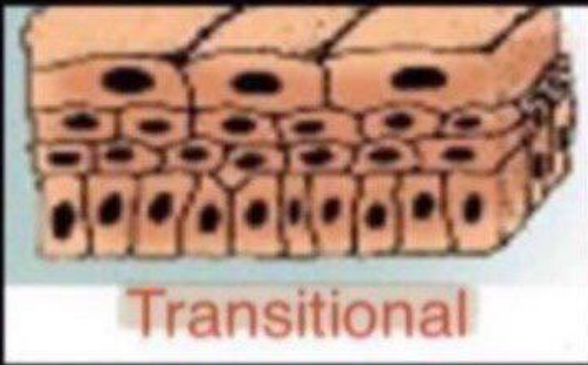
Simple columnar



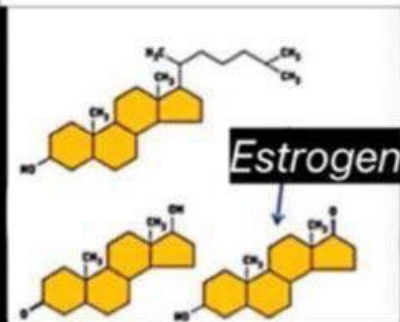
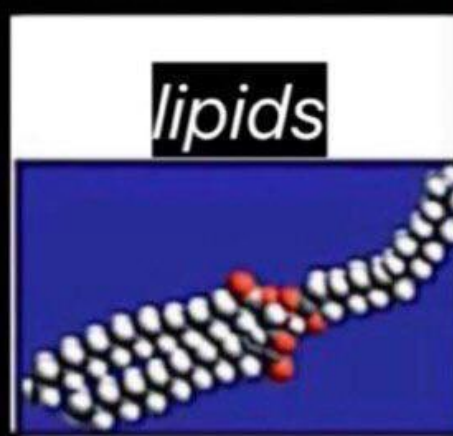
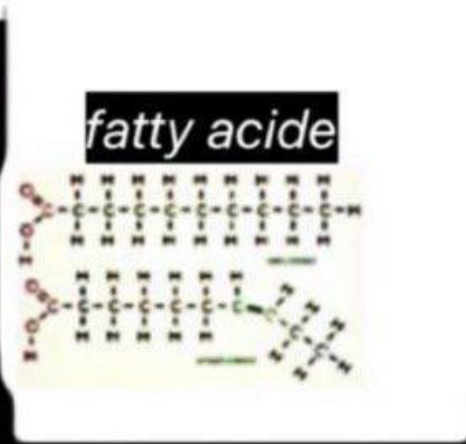
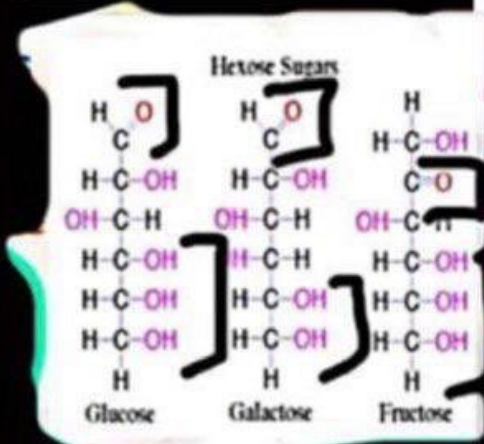
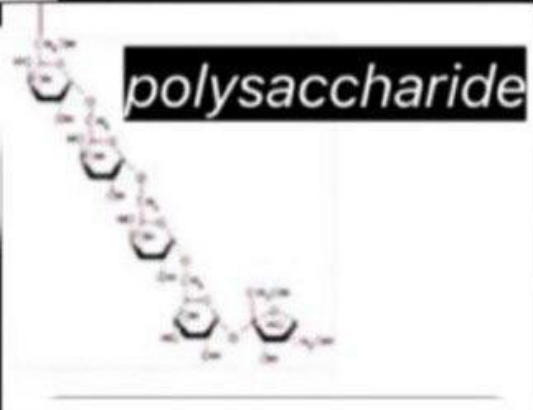
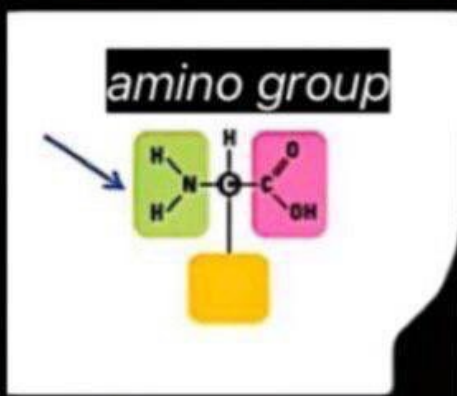
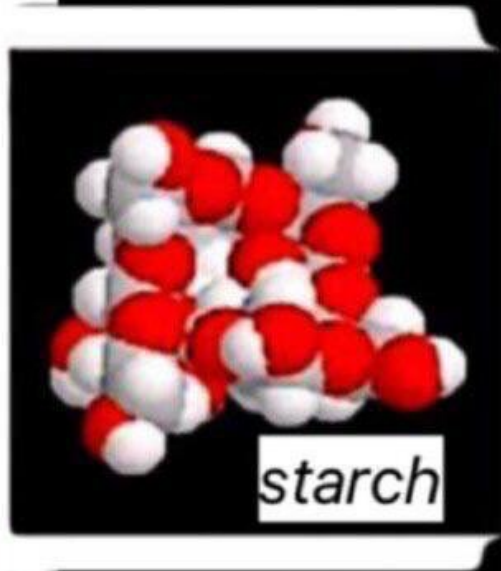
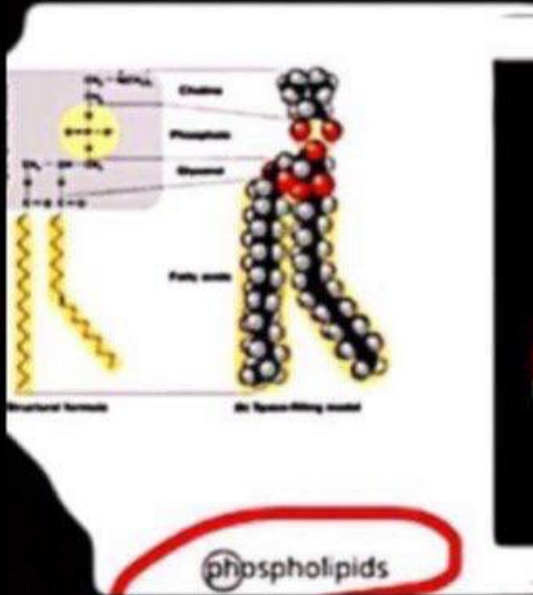
Pseudostratified columnar



Simple squamous epithelium



Transitional



17) Cyanobacteria are organisms of

prokaryotes

18) plantae organisms of

Eukaryotes

19) Carl Linnaeus set up

Three

20) All insects are members of phylum .

Arthropoda

21) Frog is

amphibia

22) Hawk is

bird

23) crabs, shrimps, lobsters belong to

Crustaceans

- 14) Grouper is a member of Bony fishes « جواب »
- 15) organisms of phylum porifera have organs or nerve cells or muscle cells « جواب »
- 16) kingdom plantae is classified into six main groups « جواب »
- 17) Taxonomic rankings is arranged from the largest to the smallest (✓) « جواب »
- 18) Taxonomic rankings is arranged from the smallest to the largest « جواب »
- 19) (Bat belongs to class of Aves (birds « جواب »
- 20) Most organisms of phylum porifera are salt - water sponges « جواب »
- 21) Reptiles breath through gills in larval stage, replaced by lungs in the adult « جواب »
- 22) Animals are divided into two large groups « جواب »
- 23) Asteria fish is a member of phylum Coelenterate « جواب »
- 24) species is a group of similar individuals in the characteristics of Composition and function « جواب »
- 25) All organism of kingdom ~~protista~~ protista are multicellular « جواب »
- 26) Amoeba are examples of kingdom protista « جواب »

- 1) one of the most important classification systems currently
Five
- 2) Seal is ?
Mammal
- 3) Invertebrates comprised of phyla
eight
- 4) Carl Linnaeus developed a
binary
- 5) Tapeworm and Schistosoma are example of
Platyhelminthes
- 6) protista are organisms of
Eukaryotes
- 7) Whale is
Mammal
- 8) Earth worm ~~is~~ belongs to
segmented
- 9) Fungi organisms of
Eukaryotes
- 10) Bacteria are organisms of
prokaryotes
- 11) sharks are
Cartilaginous fish
- 12) All insects have
limbs 6
- 13) is group of kingdom plantae
pteridophytae ←
- 14) kingdom plantae is classified into
four
- 15) All kingdoms but kingdom contain primitive nucleus
Monera
- 16) This method is designated to species with a
Locatein

تصحیحات ذی یلی مسوینہا متاكدین منها



star.
today at 10:25 AM

- 1) organism of kingdom Monera are Unicellular organism « حيوان »
- 2) Animals are autotrophic organism « خطأ »
- 3) Bread mold fungus & Mushroom are examples of kingdom Monera « خطأ »
- 4) crocodile belongs to reptiles « حيوان »
- 5) whale is considered as vertebrate « حيوان »
- 6) The DNA is in double stranded form in kingdom Monera « حيوان »
- 7) whale and Dolphin are considered as mammals « حيوان »
- 8) organism of kingdom fungi absorb their food from the bodies of other organisms either living or dead « حيوان »
- 9) octopus is member of phylum Echinodermate « خطأ »
- 10) kingdom Monera can survive in harsh and extreme climatic conditions « حيوان »
- 11) organisms of kingdom Monera are Eukaryotes « خطأ »
- 12) Jellyfish is a member of phylum ~~porifera~~ porifera « خطأ »
- 13) Animals are divided into two large groups vertebrates and invertebrates « حيوان »

horizontally → جواب

seen on diagram → خطاً

All drawing don't have Title → خطاً

Genus and species → جواب

stippling or dots → جواب

Diagram and graph → خطاً

lines when drawing → جواب

your page → خطاً

drawing skills → خطاً

about the specimen → جواب

anatomical shape → خطاً

information of the specimen → جواب

science of biology → جواب

اختياراً -

- 1) magnification
- 2) see
- 3) name
- 4) carefully
- 5) Biology
- 6) genus
- 7) dots
- 8) remember
- 9) pencil
- 10) clear
- 11) familiar with details
- 12) lower