

Q1: MCQ

1- Dehydration in which, and water is

- A) Polymers break down into monomers, consumed.
- B) Polymers break down into monomers, produced.
- C) polymers produced from monomers, produced
- D) Polymers produced from monomers, consumed

2) Which of the following organelles is surrounded by a double membrane ?

- A) Ribosomes
- B) Peroxisomes
- C) Mitochondria
- D) Lysosomes

3- Saturated fats

- A) Liquid at room temperature
- B) Solid at room temperature
- C) Have no double bonds
- D) both b and c

4) T4 bacteriophages are:

- A) Viruses that infect bacteria
- B) Bacteria that infects plants
- C) Eubacteria

5) Types of bacteria shape include:

- A) Coccus
- B) Spirilla
- C) Bacillus
- D) All of the above

6) Cilia and flagella consist of:

- A) 9 doublets of microtubules arranged around a pair at the center.
- B) 9 triplets of microtubules arranged in a ring.
- C) 9 triplets of microtubules arranged around a pair at the center.

7) What is the organelle that presence in both prokaryotic and eukaryotic cells?

- A) ER
- B) Mitochondria
- C) Ribosomes
- D) Golgi Apparatus

8) Centrioles in the animal cells are made up of microtubules arranged in _____ pattern.

- A) 9 + 0
- B) 9 + 1
- C) 9 + 2
- D) 9 + 3

9) Organisms that uses light as energy source and CO₂ as carbon source are called:

- A) Photoheterotrophs
- B) Photoautotrophs
- C) Chemoautotrophs
- D) Chemoheterotrophs

10) Bacteria cells divide by:

- A) Binary fission
- B) Lytic cycle
- C) Mitosis
- D) Meiosis

11) Which organelle sorts, chemically modifies and packages new proteins?

- A) Ribosomes
- B) Golgi Apparatus
- C) Nucleus
- D) Mitochondria

12) is a membrane bound sac of enzymes that digest macromolecules.

- A) Lysosomes

13) is involved in the production ribosomes.

- A) ER
- B) Nucleolus

14) The cytoskeleton role(s) in the cell:

- A) Maintaining the cell shape.
- B) Movement
- C) Contraction
- D) All of the above

15) Polymers are disassembled to monomers by:

- A) Hydrolysis reaction

16) Phospholipids are amphipathic which means that have:

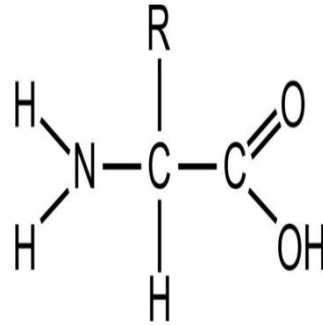
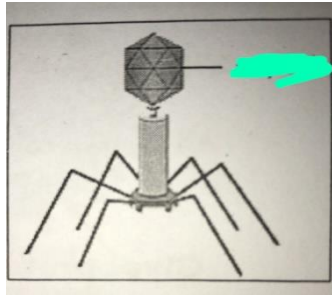
- A) Hydrophobic region
- B) Hydrophilic region
- C) Both hydrophobic and Hydrophilic regions

17) The genome in prokaryotes is in the:

- A) Nucleoid
- B) Nucleolus
- C) Nucleus
- D) Mitochondria

18) Which of the following is a type of prokaryotes:

- A) Bacteria
- B) Virus
- C) Archea
- D) Both A and C



19) The labeled part is

- A) Tobacco mosaic virus (TMV) capsid
- B) T4 bacteriophage head
- C) HIV capsid

20) The figure shows the structure of

- A) Glycerol
- B) Glycogen
- C) Fatty acid
- D) Amino acid

Q2: True and False

- 1- Lipids are not polymers **(True)**
- 2- Viruses can reproduced outside host cell **(False)**
- 3- The protein forming microfilaments is actin **(True)**
- 4- Gram –ve bacteria have small amount of peptidoglycan they appear violet **(False)**
- 5- The lytic cycle result in the death of host cell **(True)**
- 6- The cell theory states that All cells are surrounded by cell wall **(False)**
- 7- Mitochondria are the only cell organelles that contain their own DNA **(True)**
- 8- smooth ER has a significant function in producing proteins **(False)**
- 9- Centrioles are only in animal cells **(True)**
- 10- Exterme halophiles live in saline places **(True)**