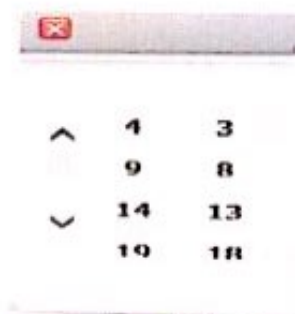


44

In mitosis, cells with 16 chromosomes produce daughter cells with \_\_\_\_\_.

- 8 chromosomes
- 4 chromosomes
- 16 chromosomes
- 32 chromosomes



منصفه الأسئلة

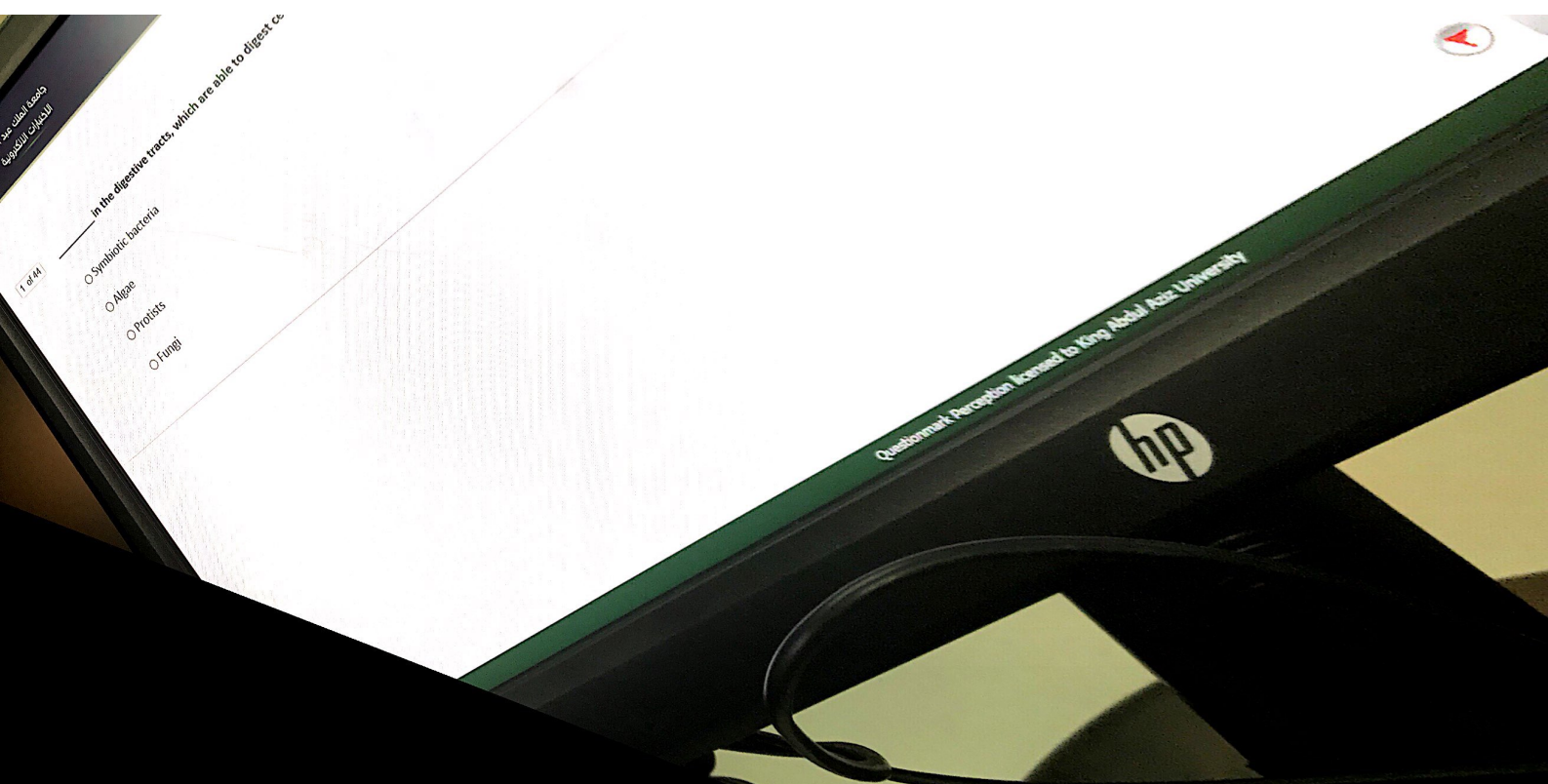
Which of the following regarding animals characteristics is False:

- animal cells have cell wall
- animals are multi-cellular
- animals reproduce sexually
- animals are mobile

18 of 44

**Crustaceans belong to \_\_\_\_\_.**

- Round worms
- Flat worms
- Arthropoda
- Annelida



17 of 44

Replication of DNA is considered semiconservative because each old strand

- catalyst
- template
- pair
- fragment



Replication of DNA is considered semiconservative because each old strand serves as a \_\_\_\_\_ for the formation of a new strand

- catalyst
- template
- pair
- fragment

38 of 44

Regarding DNA structure ,which is correct ?

- The sugar is deoxyribose
  - the sugar is ribose
  - C is paired with A
  - The monomer is amino acid
-

Regarding DNA structure, which is correct?

- The sugar is deoxyribose
- the sugar is ribose
- C is paired with A
- The monomer is amino acid




جامعة  
البحرين

The ability of an organisms to maintain the stability of their internal environment is

- reproduction
- energy processing
- homeostasis
- breath processing

Questionmark4 Perception licensed to King Abdul Aziz University



\_\_\_\_\_ is the process during which a diploid cell undergoes two successive nuclear divisions resulting in four haploid cells

- Fertilization
- Cytokinesis
- Mitosis
- Meiosis



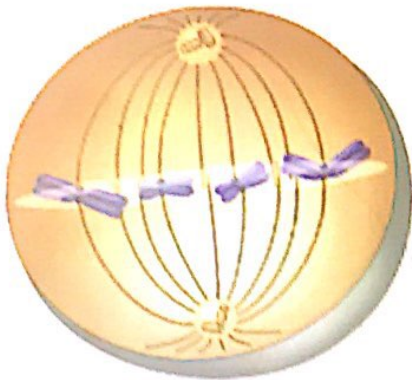
1 of 44

\_\_\_\_\_ in the digestive tracts, which are able to digest cellulose

- Symbiotic bacteria
- Algae
- Protists
- Fungi

12 of 44

In this photo, what is the phase of mitosis cell division?

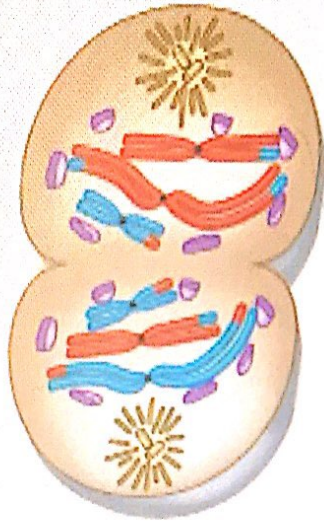


- prophase
- metaphase
- interphase
- telophase

ارسال

43 of 44

In this photo, what is the phase of miosis cell division?

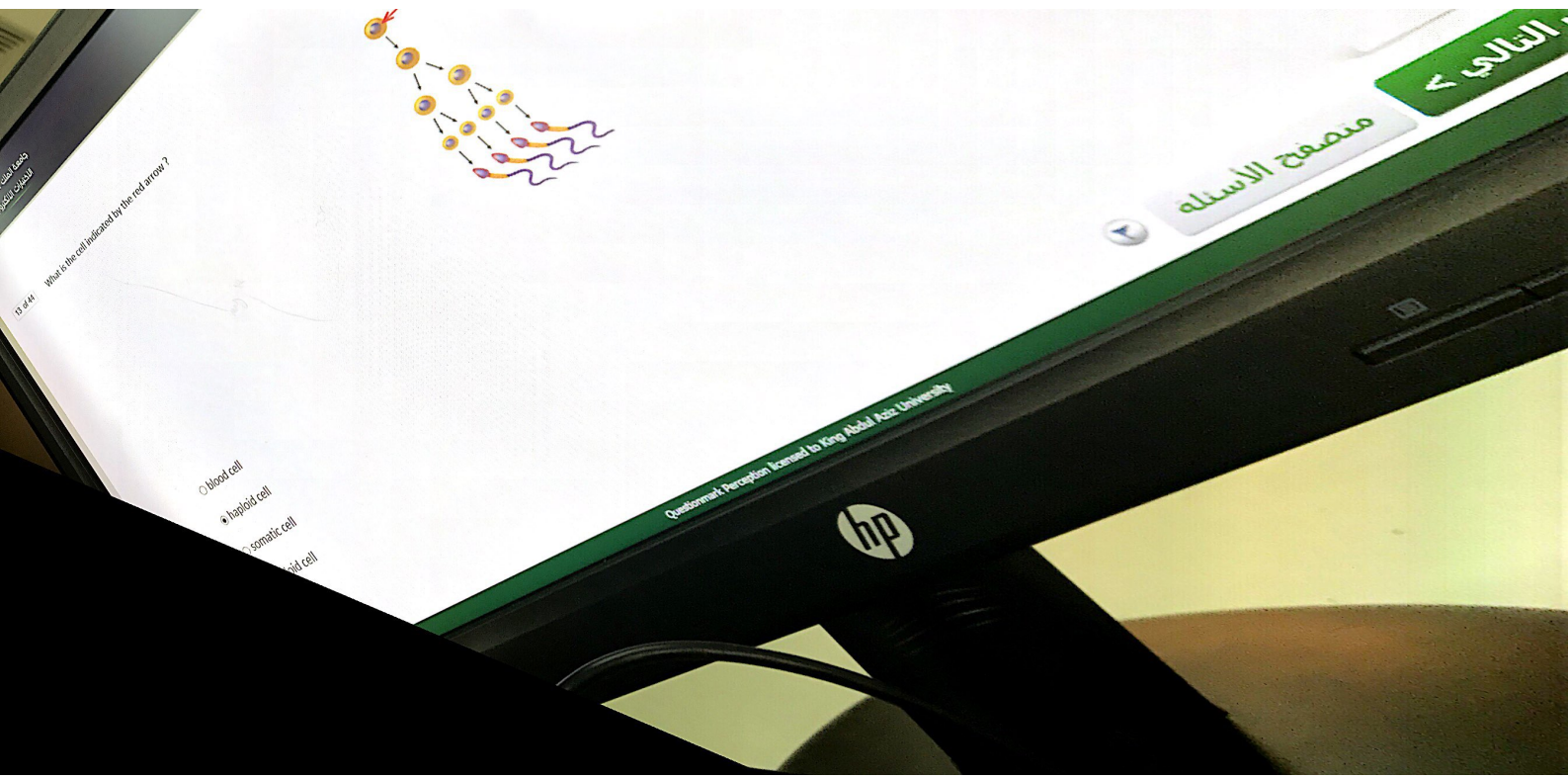


- metaphase 1
- anaphase 1
- prophase 1
- telophase I & cytokinesis

29 of 44

## Homologous chromosomes \_\_\_\_\_

- have genes at the same loci
- separate in meiosis II
- have no genes
- are found in gametes



13.441 What is the cell indicated by the red arrow?

- blood cell
- haploid cell
- somatic cell
- zygote cell

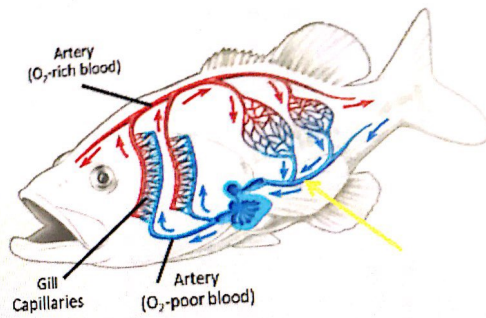
متصفح الأسئلة

التالي <

Questionmark Perception licensed by King Abdul Aziz University



What is the part indicated by the yellow arrow in the picture?



- artery
- ventricle
- veins
- atrium



26 of 44

The genotype of (BB alleles) for a gene mean \_\_\_\_\_

- heterozygous for the dominant
- homozygous for the dominant
- monozygous for recessive
- homozygous for the recessive

Which of the following statements regarding spermatogenesis is TRUE?

- Mitosis in spermatogenesis produces two cells
- Meiosis in spermatogenesis produces two cells
- Meiosis in spermatogenesis produces four cells
- Meiosis in spermatogenesis produces one cell

If fertilization does not occur, the drop in LH hormone shuts down ----- with its hormone

- testes
- corpus luteum
- ovum
- follicle



صفح الأسئلة

Atiz University

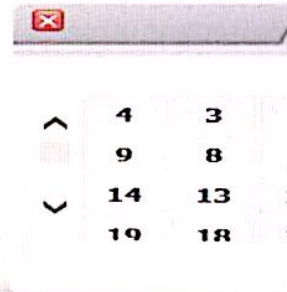
41 of 44

The longest stage of the cell cycle is \_\_\_\_\_.

- prophase
- anaphse
- interphase
- metaphase

44 In mitosis, cells with 16 chromosomes produce daughter cells with \_\_\_\_\_.

- 8 chromosomes
- 4 chromosomes
- 16 chromosomes
- 32 chromosomes

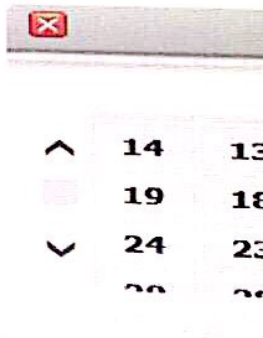


متصفح الأسئلة

السؤال التالي <

The male human gametes called sperm are produced in the \_\_\_\_\_.

- uterus
- testes
- prostate
- ovaries



^	14	13
■	19	18
v	24	23
	28	27

4 Asexual reproduction in animals might involve \_\_\_\_\_.

- ovulation
- fission and budding
- spermatogenesis
- Oogenesis

9
14
19
24

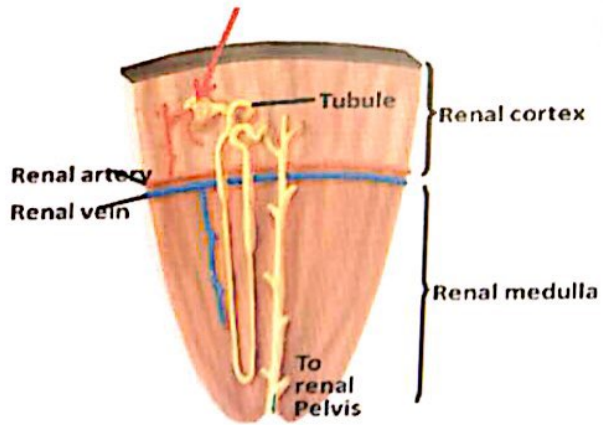
19 of 44

• \_\_\_\_\_ prevents the back-flow of blood.

- SA node
- Heart rate
- Heart valve
- Cardiac output



What is the part indicated by the red arrow of the C. Sec. kidney?

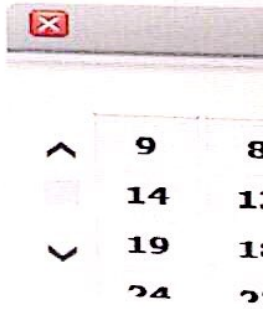


- collecting duct
- proximal tubule
- Bowman's capsule
- loop of Henle

^	14
^	19
v	24
v	28

The nephron is \_\_\_\_\_ .

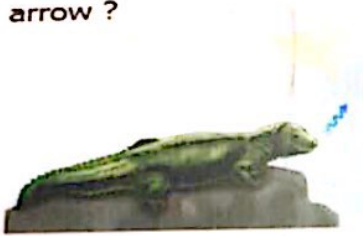
- called the "seminiferous tubules"
- the site of urine storage
- the site of bile storage
- the functional unit of the kidney



✕		
^	9	8
	14	11
v	19	15
	24	20

44

In this picture, what is the type of heat exchange with the environment that indicated by the blue arrow ?



- conduction
- evaporation
- radiation
- convection



الأسئلة

4	3	2	1
9	8	7	6
14	13	12	11
19	18	17	16

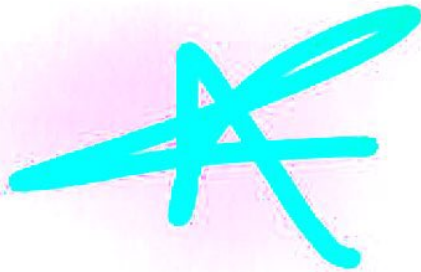
All the followings are true about saltwater fish EXCEPT \_\_\_\_\_

- Pump out excess salt
- Drink seawater
- gain water by osmosis
- lose water by osmosis



After cleavage, a ball of cells undergo \_\_\_\_\_; to form three-layered stage.

- gastrulation
- meiosis
- mitosis
- blastula formation



^	9	8	7
	14	13	12
v	19	18	17
	24	23	22



صفحة الأسئلة

of 44

The first step in the formation of urine is the\_\_\_\_\_.

- filtration of water and many small solutes into the nephron
- secretion of hydrogen ions into the kidney tubules
- secretion of urea into the renal pelvis
- reabsorption of poisons by the kidney tubules

^	4	3
	9	8
v	14	13
	19	18



متصفح الأسئلة

السؤال التالي <

44 In this photo, what is the phase of miosis cell division?



- prophase II
- metaphase II
- anaphase II
- telophase II & cytokinesis

<	4	3	2
>	9	8	7
<	14	13	12
>	19	18	17

متصفح الأسئلة

التالي >





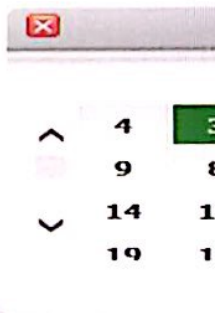
\_\_\_\_\_ is death of brain tissue from blocked arteries in the head.

Stroke

Heart murmur

Atherosclerosis

Herart attack



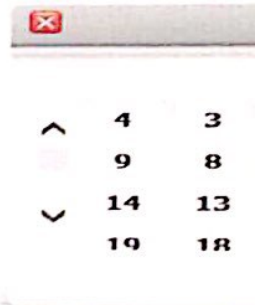
^	4	3
○	9	8
∨	14	1
	19	1



في الأسئلة

7 of 44 All the followings are true about freshwater fish EXCEPT \_\_\_\_\_

- lose water by osmosis
- excrete excess water in urine
- Uptake of salt by gills
- gain water by osmosis



4	3
9	8
14	13
19	18

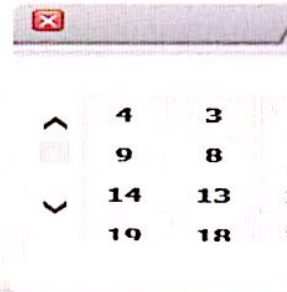


متصفح الأسئلة

التالي >

44 In mitosis, cells with 16 chromosomes produce daughter cells with \_\_\_\_\_.

- 8 chromosomes
- 4 chromosomes
- 16 chromosomes
- 32 chromosomes



متصفح الأسئلة

السؤال التالي <

\_\_\_\_\_ is the first stage of embryonic development..

- Gastrulation
- Oogenesis
- Ovulation
- Fertilization

44

\_\_\_\_\_ is the stage of cell division in which the cytoplasm divides into two daughter cells

- Crossing over
- Meiosis
- S phase
- Cytokinesis

الأسئلة

^	19	18	17	16
	24	23	22	21
v	29	28	27	26
	--	--	--	--

مصحح الأسئلة

السؤال التالي < السابق

....., prostate and Bulbourethral gland

- vas deferens
- testes
- seminal vesicles
- epididymis



..... gives sperm to semen, which are

الأعداد

^	24	23	22	21
	29	28	27	26
v	34	33	32	31



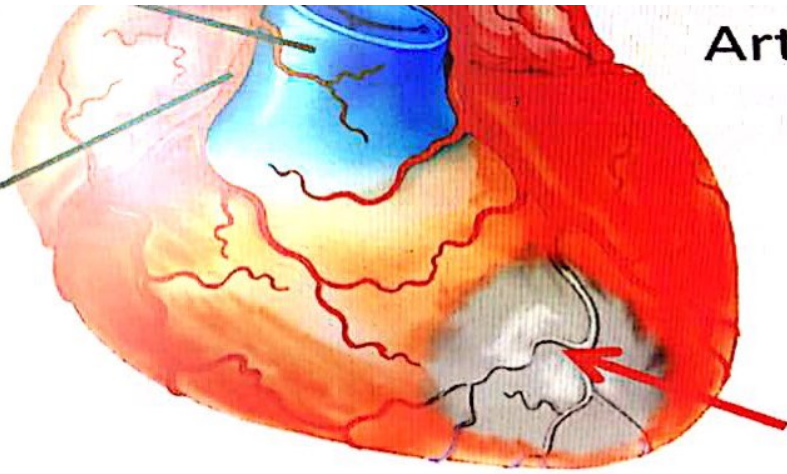
منصوح الأسئلة

السؤال التالي <

السابق

Right coronary Artery

Artery



dead muscle

- thin walls
- narrow walls
- blockage

^	29	28
■	34	33
v	39	38



متصفح الأسئلة

قال الطالب

Women's \_\_\_\_\_ produce the developing eggs and sex hormones.

- ovaries
- testes
- embryos
- sperms

⌵	29	28	27
⌵	34	33	32
⌵	39	38	37



متصفح الأسئلة

السؤال التالي <



of 44

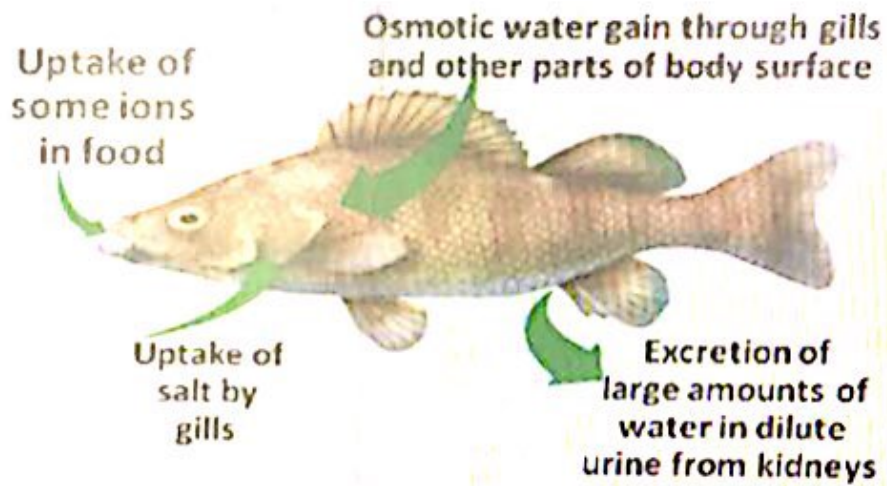
Fertilization is the union of sperm and egg to form a \_\_\_\_\_

- diploid zygote
- mature follicle
- haploid cell
- corpus luteum

Erythropoietin hormone (EPO) Regulates \_\_\_\_\_

- egg production
- red blood cell production
- blood clotting
- sperm production

The fish in this picture refers to \_\_\_\_\_



- a saltwater fish
- a freshwater fish
- dirty water fish
- acidic water fish

1438 377

41 of 44

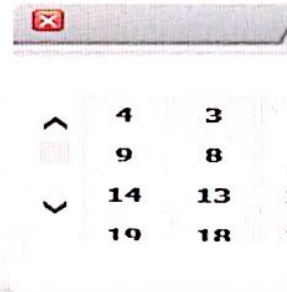
\_\_\_\_\_ reproduce by binary fission.

- plant
- Fungi
- Human
- Prokaryotes



44 In mitosis, cells with 16 chromosomes produce daughter cells with \_\_\_\_\_.

- 8 chromosomes
- 4 chromosomes
- 16 chromosomes
- 32 chromosomes

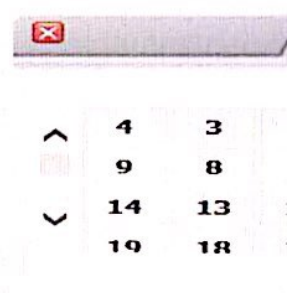


متصفح الأسئلة

السؤال التالي <

44 In mitosis, cells with 16 chromosomes produce daughter cells with \_\_\_\_\_.

- 8 chromosomes
- 4 chromosomes
- 16 chromosomes
- 32 chromosomes



متصفح الأسئلة

السؤال التالي <

The male human gametes called sperm are produced in the\_\_\_\_\_.

- uterus
- testes
- prostate
- ovaries



- ^ 14
- 19
- ∨ 24
- 28

....., prostate and Bulbourethral gland

vas deferens

seminal vesicles

epididymis



..... glands contribute to semen, which are

A screenshot of a mobile application interface. At the top right, there is a header with the Arabic word 'الأسئلة' (Questions). Below it is a grid of numbers arranged in a 3x4 pattern. The numbers are: Row 1: 24, 23, 22, 21; Row 2: 29, 28, 27, 26; Row 3: 34, 33, 32, 31. The number 29 is highlighted with a green background. To the left of the grid are three arrows: an upward arrow, a rightward arrow, and a downward arrow. At the bottom of the grid, there are two green buttons with white text: 'السؤال التالي <' (Next question) and 'السابق' (Previous).

متصفح الأسئلة

السؤال التالي <

السابق



Fertilization is the union of sperm and egg to form a \_\_\_\_\_

- diploid zygote
- mature follicle
- haploid cell
- corpus luteum

\_\_\_\_\_ is the first stage of embryonic development..

- Gastrulation
- Oogenesis
- Ovulation
- Fertilization

.....,prostate and Bulbourethral gland .....semen glands contribute to semen ,which are

- vas deferens
- testes
- seminal vesicles
- epididymis

الأسئلة				
^	24	23	22	21
	29	28	27	26
v	34	33	32	31



صفحة الأسئلة

السؤال التالي <

السابق

Women's \_\_\_\_\_ produce the developing eggs and sex hormones.

- ovaries
- testes
- embryos
- sperms

⌕			
^	29	28	27
■	34	33	32
v	39	38	37



متصفح الأسئلة

السؤال التالي <

- egg production
- red blood cell production
- blood clotting
- sperm production

\_\_\_\_\_ occurs when excess  $H^+$  and toxins are added to t

- reabsorption
- filtration
- secretion
- excretion

\_\_\_\_\_ is the stage of cell division in which the cytoplasm divides into two daughter cells

- Crossing over
- Meiosis
- S phase
- Cytokinesis

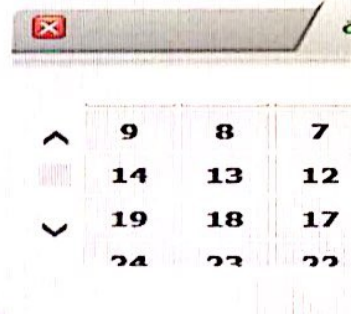


أسئلة

^	19	18	17	16
	24	23	22	21
v	29	28	27	26
	--	--	--	--

After cleavage, a ball of cells undergo \_\_\_\_\_; to form three-layered stage.

- gastrulation
- meiosis
- mitosis
- blastula formation



^	9	8	7
▬	14	13	12
v	19	18	17
	24	23	22

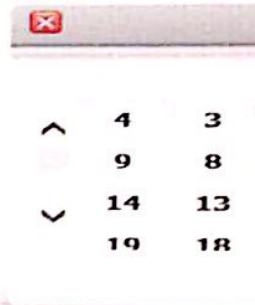
٢  
صفحة الأسئلة



7 of 44

All the followings are true about freshwater fish EXCEPT \_\_\_\_\_

- lose water by osmosis
- excrete excess water in urine
- Uptake of salt by gills
- gain water by osmosis



4	3
9	8
14	13
19	18



متصفح الأسئلة

التالي >

Erythropoietin hormone (EPO) Regulates \_\_\_\_\_

- egg production
- red blood cell production
- blood clotting
- sperm production

In this picture, what is the type of heat exchange with the environment that indicated by the blue arrow ?



- conduction
- evaporation
- radiation
- convection

		الأسئلة			
^	4	3	2	1	
	9	8	7	6	
v	14	13	12	11	
	19	18	17	16	



متصفح الأسئلة

السؤال التالي <

سابق

44 In this photo, what is the phase of miosis cell division?



- prophase II
- metaphase II
- anaphase II
- telophase II & cytokinesis

<	4	3	2
>	9	8	7
<	14	13	12
>	19	18	17



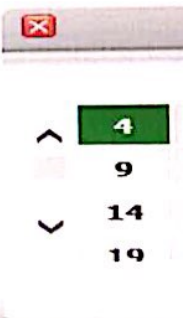
متصفح الأسئلة



4 of 44

The role of (AVnode) in heart is to \_\_\_\_\_

- relays signals to the ventricles
- initiate heart beat
- control blood pressure
- control atherosclerosis



4
9
14
19

All the followings are true about saltwater fish EXCEPT \_\_\_\_\_

- Pump out excess salt
- Drink seawater
- gain water by osmosis
- lose water by osmosis

4 Asexual reproduction in animals might involve \_\_\_\_\_.

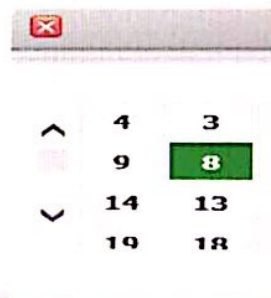
- ovulation
- fission and budding
- spermatogenesis
- Oogenesis

9
14
19
24

of 44

The first step in the formation of urine is the\_\_\_\_\_.

- filtration of water and many small solutes into the nephron
- secretion of hydrogen ions into the kidney tubules
- secretion of urea into the renal pelvis
- reabsorption of poisons by the kidney tubules



متصفح الأسئلة

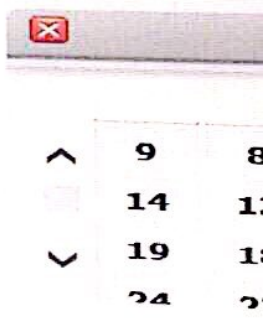
السؤال التالي <





The nephron is \_\_\_\_\_ .

- called the "seminiferous tubules"
- the site of urine storage
- the site of bile storage
- the functional unit of the kidney



^	9	8
□	14	11
v	19	15
	24	20

19 of 44

• \_\_\_\_\_ prevents the back-flow of blood.

- SA node
- Heart rate
- Heart valve
- Cardiac output

4 In Mendel's F<sub>2</sub> generation, one out of four plants had white flowers because \_\_\_\_\_

- both parents were heterozygous purple
- both parents were heterozygous white
- one parent was homozygous recessive
- one parent was heterozygous purple



9



14



19



24

1438 377

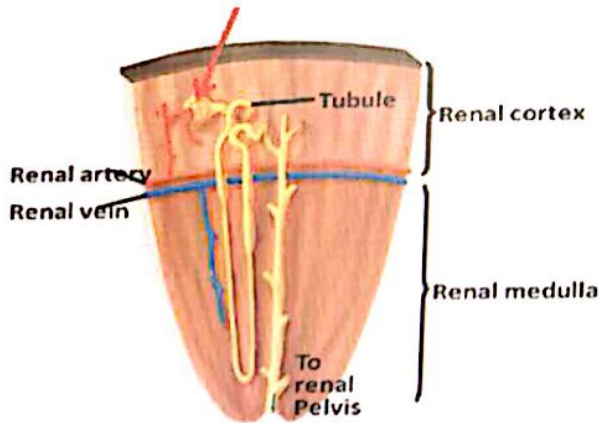
41 of 44

\_\_\_\_\_ reproduce by binary fission.

- plant
- Fungi
- Human
- Prokaryotes



What is the part indicated by the red arrow of the C. Sec. kidney?



- collecting duct
- proximal tubule
- Bowman's capsule
- loop of Henle

^	14
^	19
v	24
v	28