



جامعة الملك سعود - كلية العلوم - قسم الكيمياء
(الاختبار النصفى الثانى) فى مقرر 145 كيم (15-06-1435هـ) الموافق (15-04-2014م)
(الفصل الدراسى الثانى 1434/5هـ)
الزمن: ساعة ونصف
أسم الطالبية: **Model Answer** رقم الطالبية:
رقم الشعبة: رقم التسلسل:

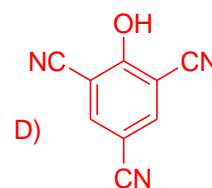
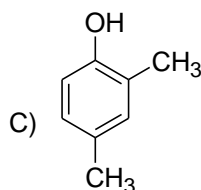
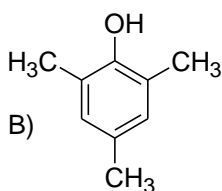
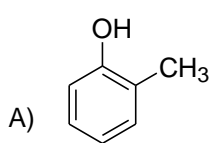
ملاحظة هامة: تصحيح الامتحان سيكون بناء على الإجابة المكتوبة فى الجدول أسفل (حرف الإجابة الصحيحة) ولن ينظر إلى بقية الأوراق والتي تعتبر مسودة.

Answer Sheet*

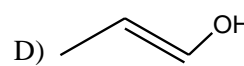
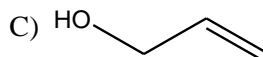
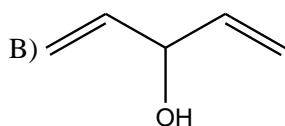
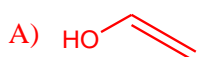
| الإجابة | Question | الإجابة | Question |
|---------|----------|---------|----------|
| | 18 | | 1 |
| | 19 | | 2 |
| | 20 | | 3 |
| | 21 | | 4 |
| | 22 | | 5 |
| | 23 | | 6 |
| | 24 | | 7 |
| | 25 | | 8 |
| | 26 | | 9 |
| | 27 | | 10 |
| | 28 | | 11 |
| | 29 | | 12 |
| | 30 | | 13 |
| | | | 14 |
| | | | 15 |
| | | | 16 |
| | | | 17 |

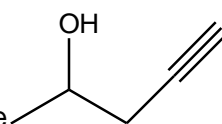
(I) Choose the correct answer for the following:

1. The **strongest acid** is:



2. Which one from the following is an example of **vinyl alcohol**?



3. The **IUPAC** name for the following structure  is:

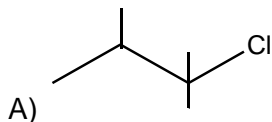
A) 1-Pentyne-4-ol

B) 4-Hydroxy-pent-1-yne

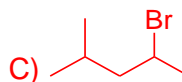
C) 4-Pentyne-2-ol

D) 2-Hydroxy-pent-4-yne

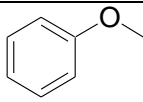
4. Which of the following compounds is a secondary (**2°**) **organic halide**?



B)



D) CH₃I

5. The **common** name for this compound  is:

A) Styrene

B) Anisol

C) Aniline

D) Toluene

6. Which of the following compounds has the **lowest boiling point**?

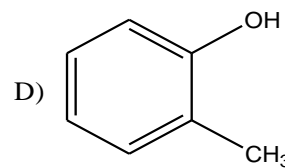
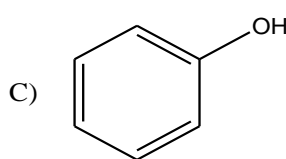
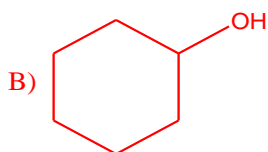
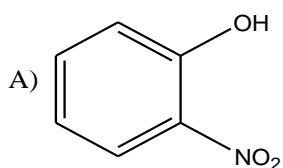
A) Pentane

B) Butyl methyl ether

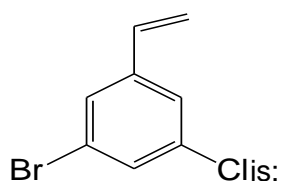
C) Pentanol

D) Pentyl bromide

7. Which of the following compounds **will not react with (NaOH)**?



8. The correct **IUPAC** name for the following compound



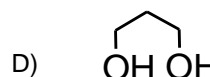
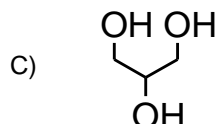
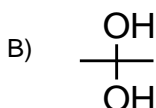
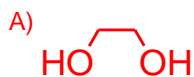
A) *m*-Bromo-*m*-chloro styrene

B) *m*-Chloro-*m*-bromostyrene

C) 3-Bromo-5-chloro styrene

D) 5-Bromo-3-chloro styrene

9. Which of the following compounds can be considered as a **glycol**?



10. The **boiling points** increase in the order of:

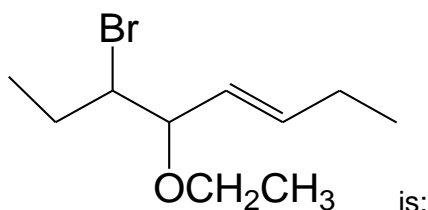
A) $\text{CH}_3\text{Br} < \text{CH}_3\text{Cl} < \text{CH}_3\text{F} < \text{CH}_3\text{I}$

B) $\text{CH}_3\text{F} < \text{CH}_3\text{Cl} < \text{CH}_3\text{Br} < \text{CH}_3\text{I}$

C) $\text{CH}_3\text{I} < \text{CH}_3\text{F} < \text{CH}_3\text{Cl} < \text{CH}_3\text{Br}$

D) $\text{CH}_3\text{Cl} < \text{CH}_3\text{Br} < \text{CH}_3\text{F} < \text{CH}_3\text{I}$

11. The correct **IUPAC** name of the following compound



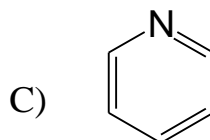
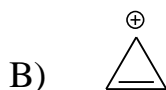
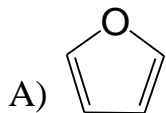
A) 6-Bromo-5-ethoxy -3-octene

B) 3-Bromo-4-ethoxy-5-octene

C) 6-Bromo-6-ethyl-5-ethoxy-3-hexene

D) 1-Bromo-1-ethyl-2-ethoxy -3-hexene

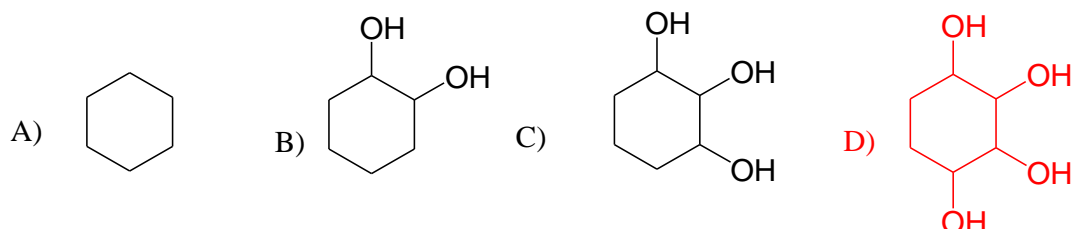
12. Which of the following compounds is **not** aromatic?



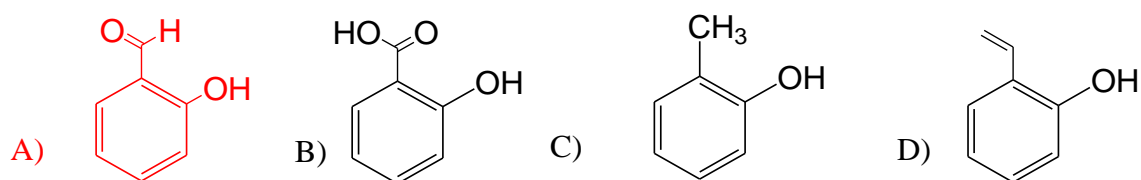
13. Which of the following compounds can't react with CrO₃?



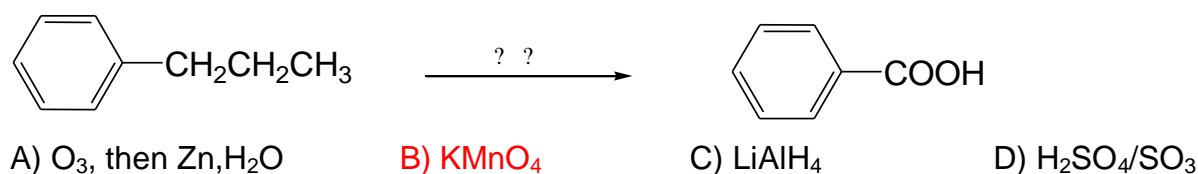
14. Which of the following compounds is the most soluble in water?



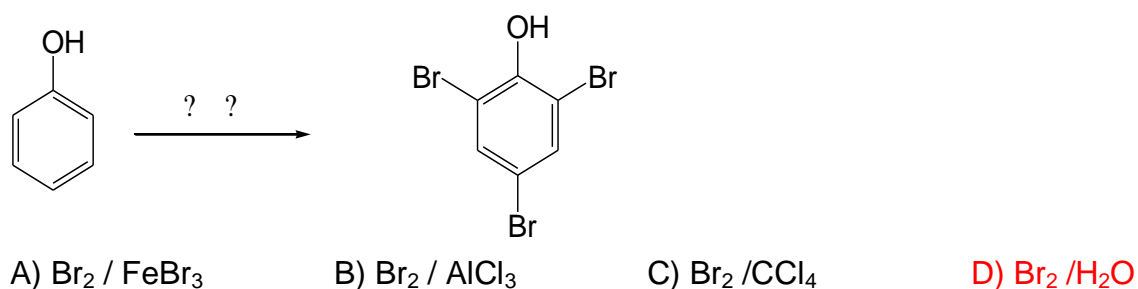
15. The correct structure of Salicylaldehyde is



16. What is the correct reagent could be used in the following reaction?



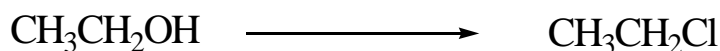
17. What is the correct condition for the following reaction?



18. The Bromine (-Br) as a substituent on the benzene ring can be effected toward the electrophilic aromatic substitution reactions, as:

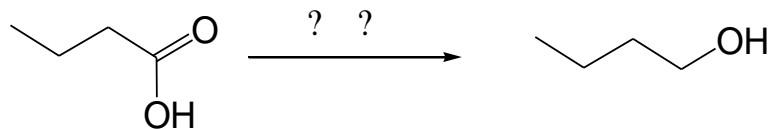
- A) Activating and *O- / P-* director
B) Activating and *m-* director
C) Deactivating and *O- / P-* director
D) Deactivating and *m-* director

19. Which is the correct **reagent** could be used in the following reaction?



- A) $\text{Cl}_2/\text{UV light}$ **B) SOCl_2** C) $\text{Cl}_2/\text{FeCl}_3$ D) CH_3MgCl

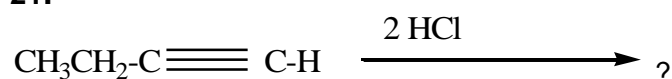
20. Which is the correct **reagent** for the following reaction?



- A) LiAlH_4** B) $\text{H}_2\text{SO}_4/\text{SO}_3$ C) KMnO_4 D) KOH

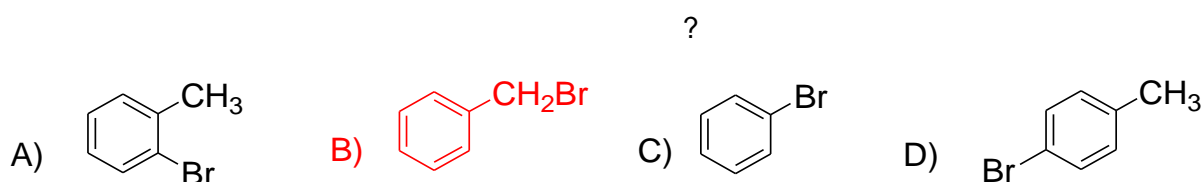
II) Choose the **major product** of the following reactions

21.

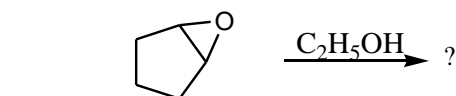
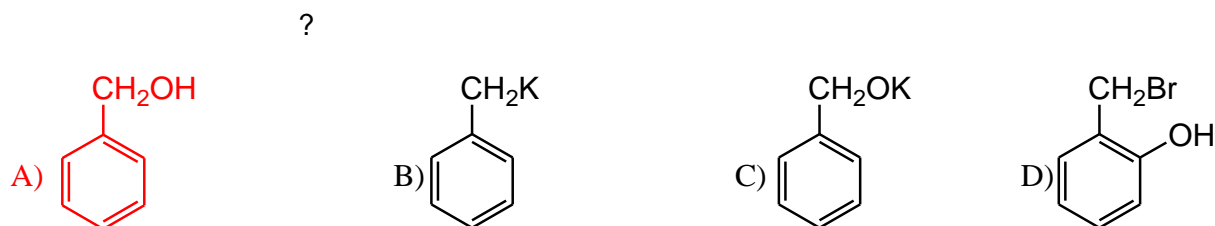


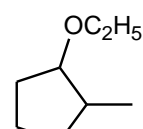
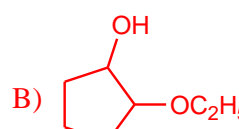
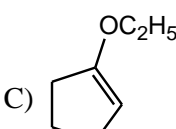
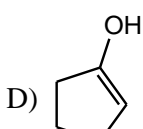
- A) 1,2-Dichlorobutane B) 1,4-Dichlorobutane
C) 1,1-Dichlorobutane **D) 2,2-Dichlorobutane**

22.



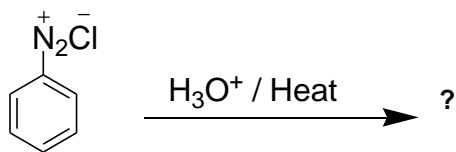
23.

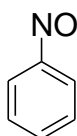


- A)  **B) ** C)  D) 

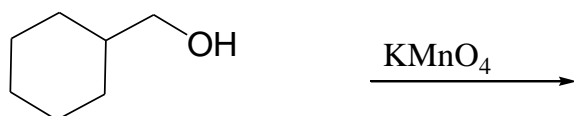
24.

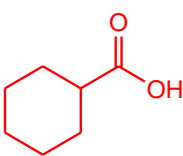
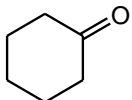
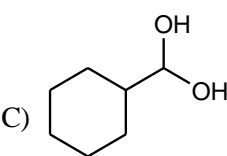
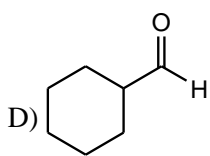
25.



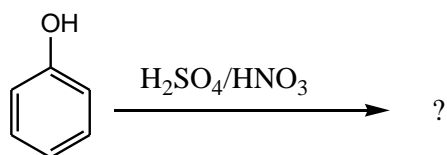
- A)  B)  C)  D) 
-

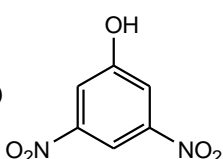
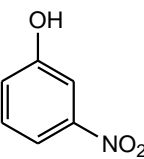
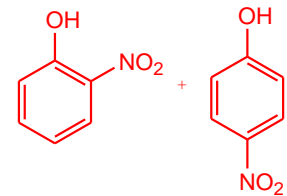
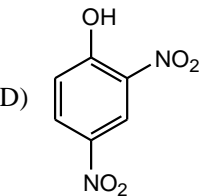
26.



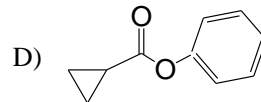
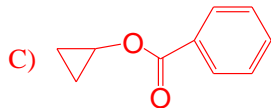
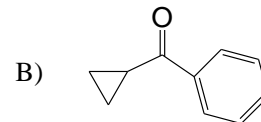
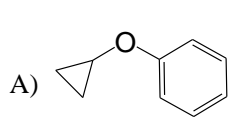
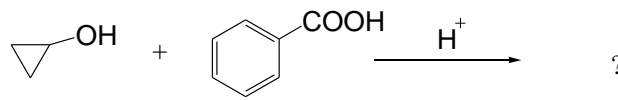
- A)  B)  C)  D) 
-

27.

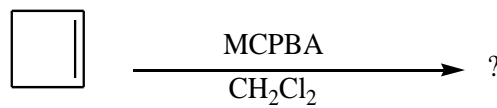


- A)  B) 
C)  D) 
-

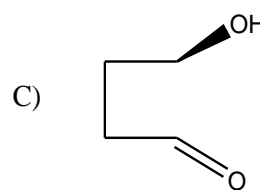
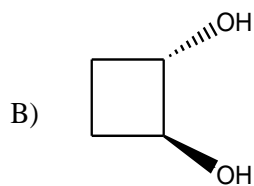
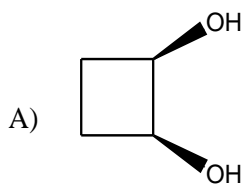
28.



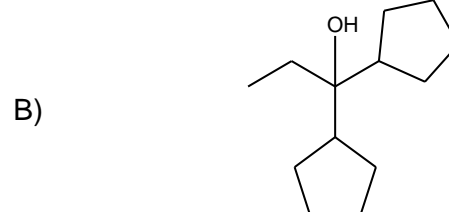
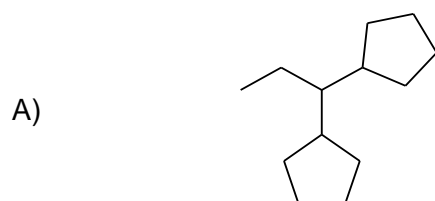
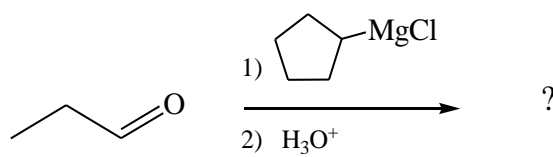
29.



is:



30.



D)

Best Wishes