

# تجميعات تقن جزئية الفاينل

1441 ترم اول

- الخطوة الاولى لل access control ؟

الجواب: [identification](#)

- الخطوة الثانيه لل access control ؟

الجواب: [authentication](#)

- الخطوة الثالثه لل access control ؟

الجواب: [authorization](#)

- يوضح ال outliers ؟

الجواب: [boxplot](#)

- مثال على WAN ؟

الجواب: [internet](#)

- An older storage device that holds up to 1.44 MB of data

الجواب: [Floppy Disk](#)

- A type of chart that contains both bars and a line graph

الجواب: [Pareto Chart](#)

- RBAC اختصار لايش؟

الجواب: [Role-Based Access](#)

- A Microsoft Office application and one of the most commonly used tools to create different types of diagrams

الجواب: [Visio Software](#)

- Faster than full backup

الجواب: [Differential backup](#)

- Elements in the plain text are rearranged or plain text characters are shifted in some regular pattern to form cipher text

الجواب: [Transposition Ciphers](#)

- مثال على Waterfall chart ؟

الجواب: Mario chart

- Are one of the most well-known visualization techniques for non-numerical data

الجواب: Tag clouds

- HDDS اختصار ل

الجواب: hard disk drive

- By using a \_\_\_\_\_ , users can communicate easily and efficiently via different communication channels. For example sending emails

الجواب: computer network

- Any kind of malicious activity that attempts to collect, disrupt, deny, degrade, or destroy information system resources or the information itself

الجواب: attack

- \_\_\_\_\_ are used to show time series relationships with continuous data

الجواب: line charts

- Is one of the most powerful professional business intelligence tools for dashboarding

الجواب: Tableau

- The hardware component of the IS requires \_\_\_\_\_

الجواب: physical protection

- Software is protected by

الجواب: technical protection

- A quantifiable and measurable unit within a KPI that tracks processes

الجواب: metric

- Is the most powerful and flexible software to create charts

الجواب: Excel

The security levels are enforced by the system and only the administrators of the system can modify them -

MAC: الجواب

System flowcharts represent \_\_\_\_\_ units interacting to achieve a goal -

multiple problem: الجواب

There are two types of data visualizations : exploratory and \_\_\_\_\_ -

explanatory: الجواب

Is the study of methods used to transmit information securely between two or more participants , so that it is unreadable by unauthorized users -

cryptography: الجواب

Main goals of information security -

confidentiality , integrity , availability: الجواب

Is a diagramming application that can be used to make a large variety of diagrams -

Dia: الجواب

composition charts على مثال -

pie chart: الجواب

An analytical dashboard mostly used in the accounting department to predict the new trends -

MRR (Monthly Renewal Rate): الجواب

يعتبر KSU storage -

cloud storage: الجواب

يعتبر DVD -

optical storage: الجواب

P.223 تعريف واحد من انواع ال CD -

P.223 تعريف واحد من انواع ال DVD -

P.271 انواع ال Security attacks -

(MAC,DAC, RBAC) P.282 -

- انواع ال data
- P.227 الجدول

الاسرع في الباك اب:

1-incremental

2- differential

3- full backup

الاسرع في ال restore : العكس

صح وخطأ:

–OneDrive is pre-installed on windows 10? **True**

-Google drive is pre-installed on windows 10? **false**

-Incremental backup takes an image of your pc (drive image)? **False**

{full computer backup}

-Venn diagrams are used in mathematics to represent logical relationships between sets (**true**)

-when you compress files using zip they take more storage space than their original size? **False**

-differential backup is slower than full backup (**false**) {faster}

-FTP requires an internet connection (**true**)

- Incremental backup is slower than full backup (**false**) {faster}

- it's easy to analyze complex and large data (**T or F**)

صور:

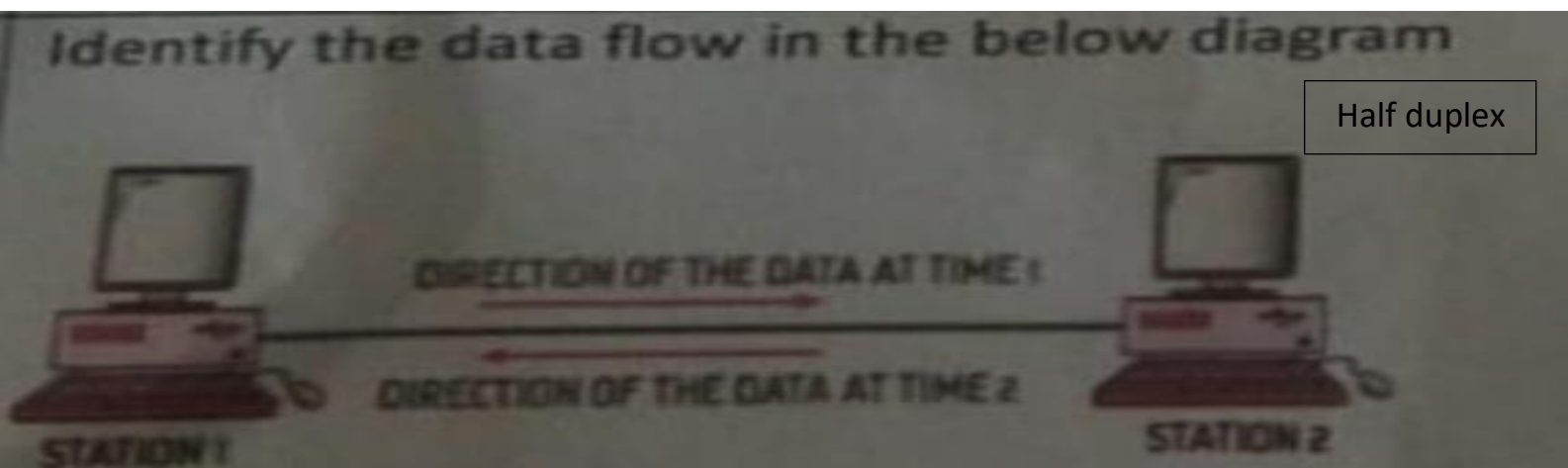
RAM- ROM- Router- PAN- Dashboard- Network interface card

Pie chart – Dropbox – Ethernet cable – Venn – MAN –bubble –histogram – CAN

A "Full computer backup" is called a \_\_\_\_\_, which means taking an image of the PC.

- Incremental backup
- Drive image
- Screen image
- Differential backup

\_\_\_\_\_ Step chart \_\_\_\_\_ chart uses vertical and horizontal lines to connect, which makes a step-like progress.



OneDrive is an online cloud storage used by \_\_\_\_\_ that allow you to store files in the cloud

Microsoft

A Digital Certificate is an electronic equivalent of an individual's identity card; it can be used to verify the identity of someone you don't know.

Digital Certificate



Security attack performed by authorized users is more difficult to detect or prevent because insiders are authorized users who operate

- TRUE
- FALSE

Backup is required to protect your data and information from any loss or to make sure that the information is available when

- TRUE
- FALSE

Values returned by a hash function are called as \_\_\_\_\_ or simply hashes.

- Message digest
- Cipher text
- Substitution Cipher
- Transposition Cipher

Mandatory Access Control (MAC) Model is applicable for organizations that do not require a high level of protection.

- TRUE
- FALSE

In Information Security, \_\_\_\_\_ allows us to keep information secret.

- Processor
- Flowchart
- Algorithm
- Cryptography

A Pareto chart is a type of chart that contains both bars and a line graph.

- TRUE
- FALSE

In data communication system, the \_\_\_\_\_ is the actual data or information to be communicated between the sender and receiver.

- Cable
- Message
- Hub
- Protocol

In Venn diagrams, the entities inside the intersection area represent the differences between sets.

- TRUE
- FALSE



One of the advantages of using HDD is that it is \_\_\_\_\_.

- Not reliable as portable disks
- Huge storage capacity
- High power consumption
- Prone to failure

The \_\_\_\_\_ dashboard, which is mostly used by CEOs, is an example of a Strategic dashboard.

- OCD (Operational CEO Dashboard)
- SaaS (Software as a Service)
- DWO (Daily Web Overview)
- MRR (Monthly Renewal Rate)

In Venn diagrams, the entities outside the intersection area represent the \_\_\_\_\_ between sets.

- Differences
- None of these
- Sums
- Similarities

In information security, \_\_\_\_\_ type of attacks allow an attacker to make sensitive information unusable or unavailable to authorized users.

- Intermediate
- Description
- Interruption
- Identification

\_\_\_\_\_ is considered an offsite backup as the storage facility provided is a data center located away from the source computer.

- Online Backup
- Local Backup
- Compression
- Local Image

When performed by **unauthorized** users (outsiders) → External Attack  
When performed by **authorized** users (insiders) → Insider Attack



Which component of the Information Systems is considered the most valuable to an organization and the main target?

- Hardware
- Procedures
- Data
- Protocol


Which of the following is an example of Data Evolution chart?

- Flow Chart
- Line Chart
- Heat Map
- Bar Chart

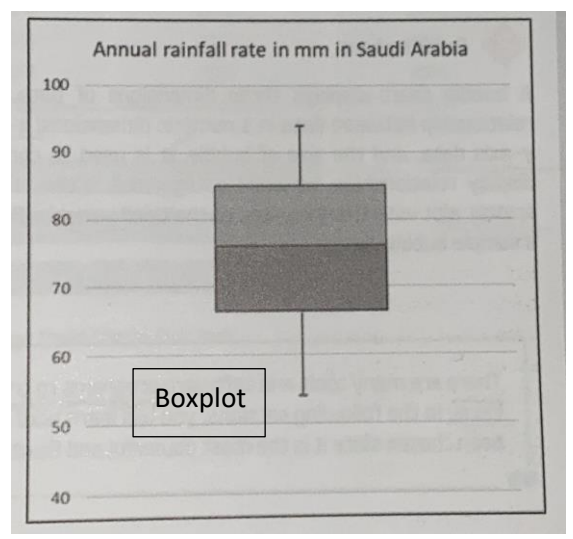
\_\_\_\_\_ is an extended version of a line chart, but it does not use the shortest distance to connect two data points; it uses vertical and horizontal lines to connect, which makes a step-like progress.

- Pie Chart
- Step chart
- Line chart
- Bar chart

Identify the data visualization technique used in the below diagram

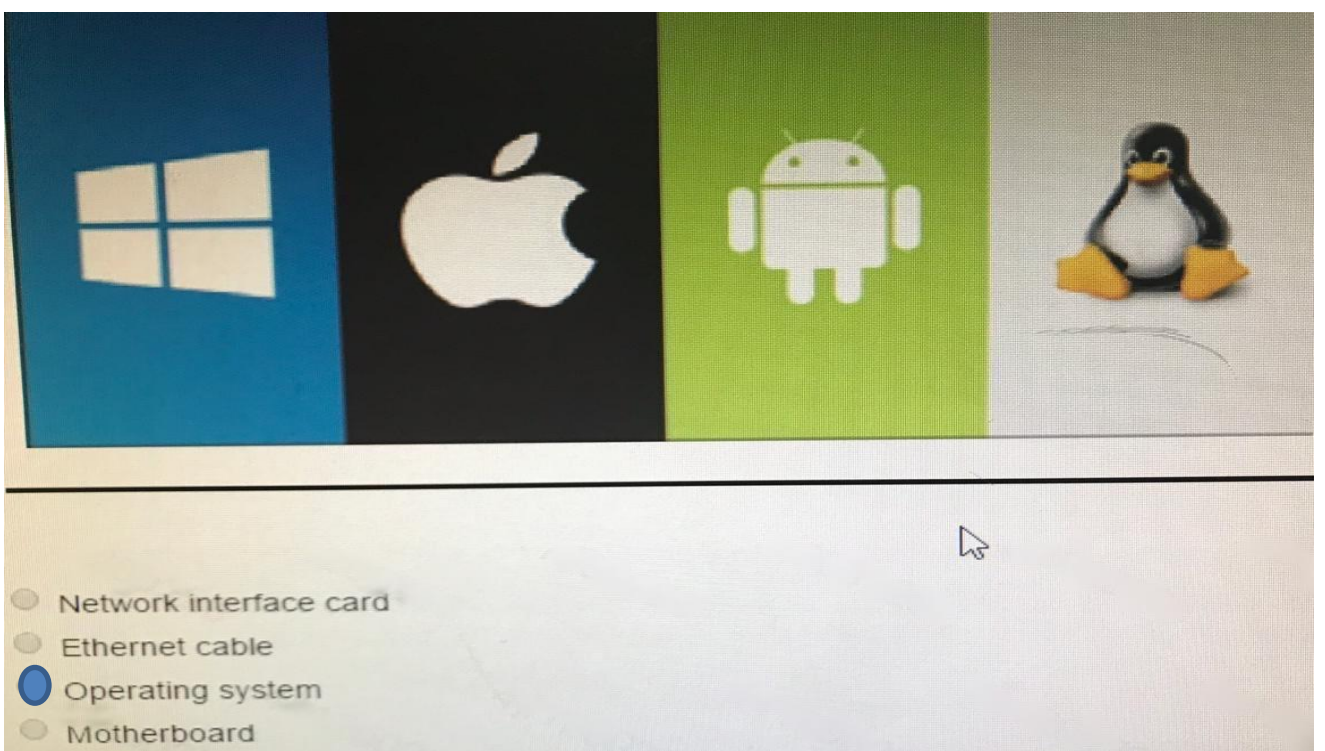


Word clouds

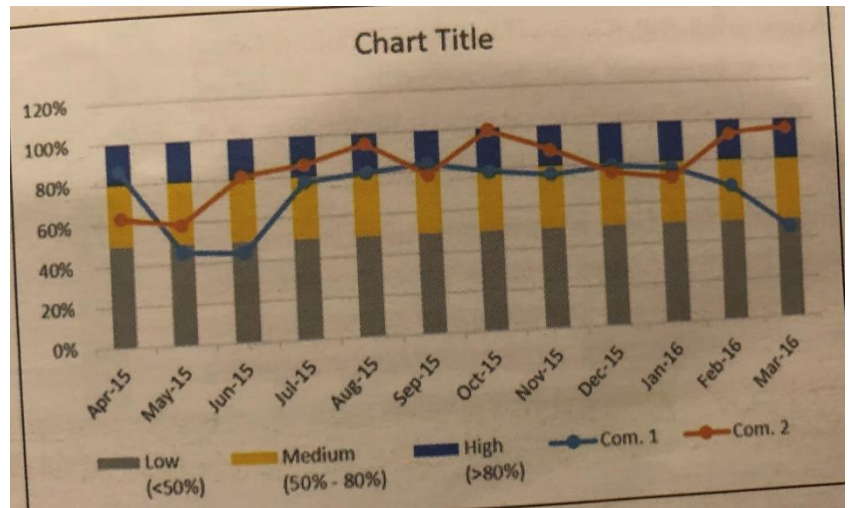


The intersection area in a Venn diagram shows the common entities between two sets





Magnetic storage



- Pie Chart
- Band chart
- Scatter plot
- Bullet chart

### Network Components

Computer networks consist of several integrated devices, functions, and features, as follows.

#### Servers

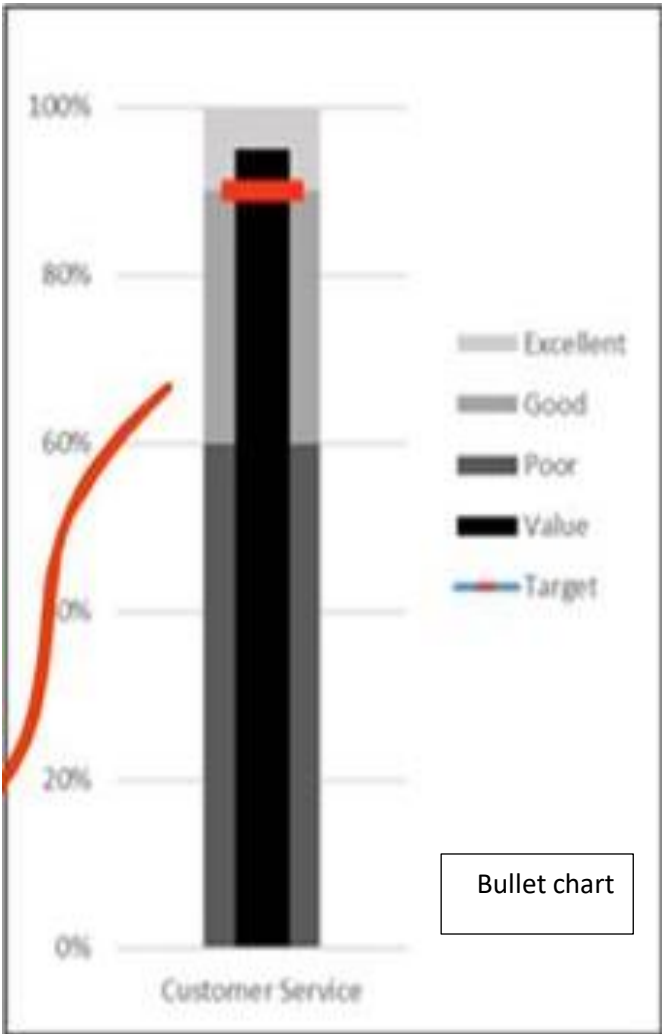
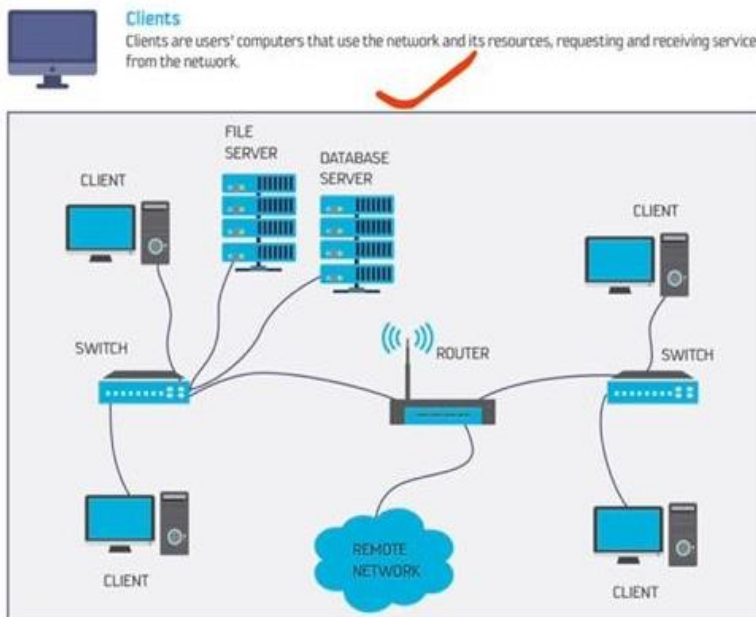
Servers are computers that hold the main applications, files, and network operating system. Servers enable users to access all network resources, with each server providing several functions:

for example print server, mail server, file server, application server, database server, and message server.

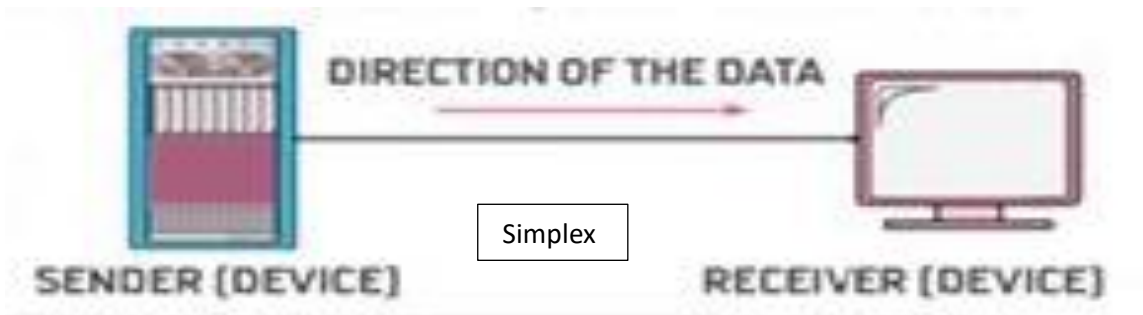
- **File Servers** provide file functions, such as storing and retrieving data, which allow users to read, write, exchange, and manage files.
- **Print Servers** provide printing functions on a network and can handle fax services.
- **Application Servers** help to reduce cost by sharing software resources, such as allowing users to share one copy of expensive software.
- **Database Servers** provide users access to strong, centralized databases.

#### Clients

Clients are users' computers that use the network and its resources, requesting and receiving services from the network.



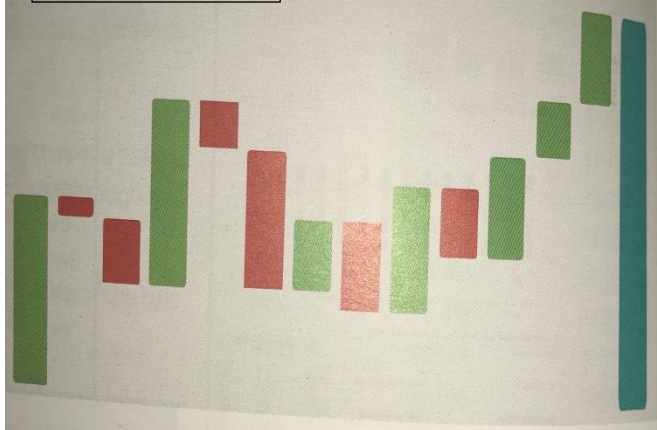
Bullet chart



WAN

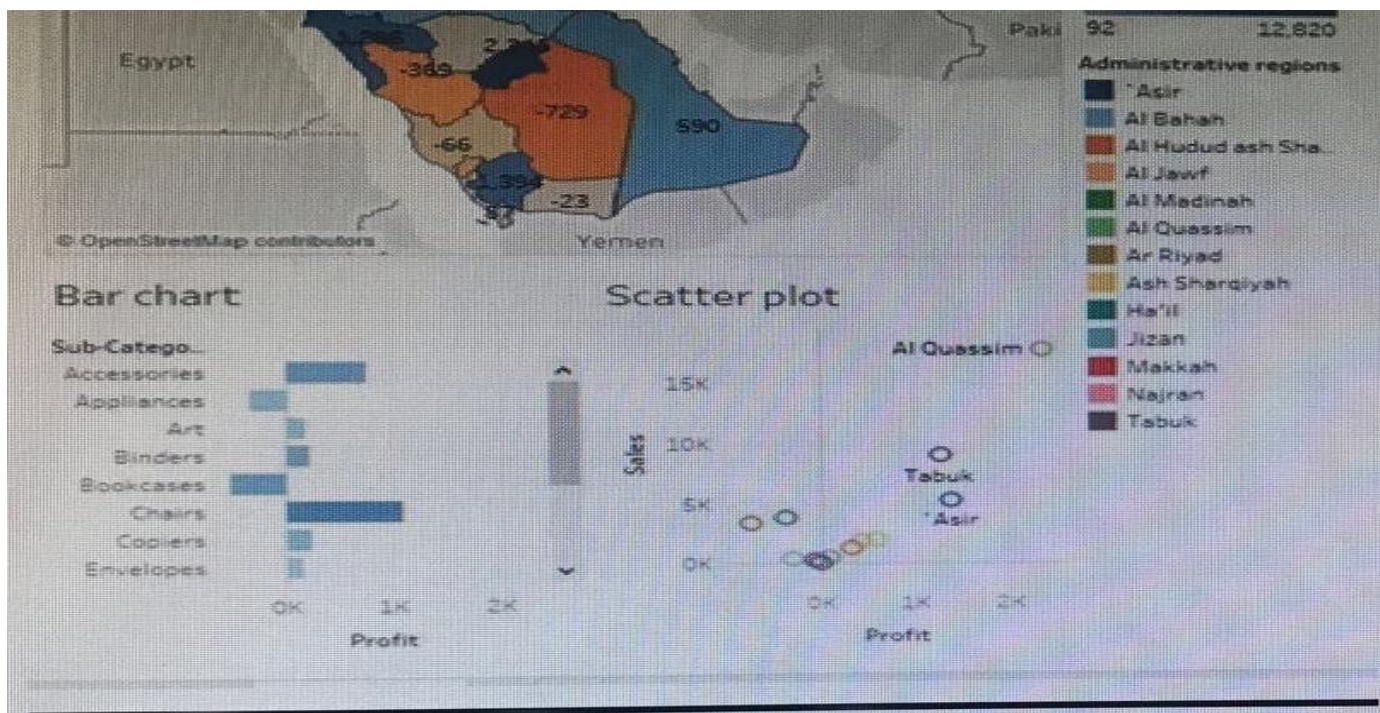
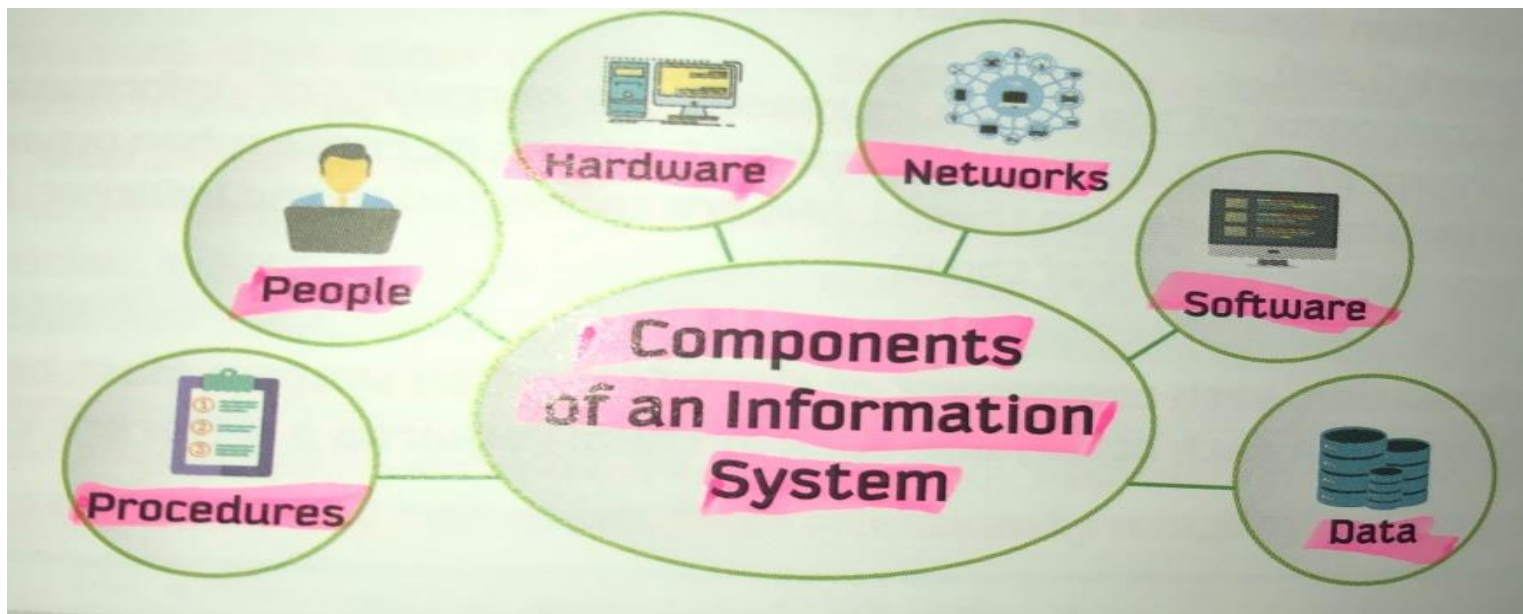
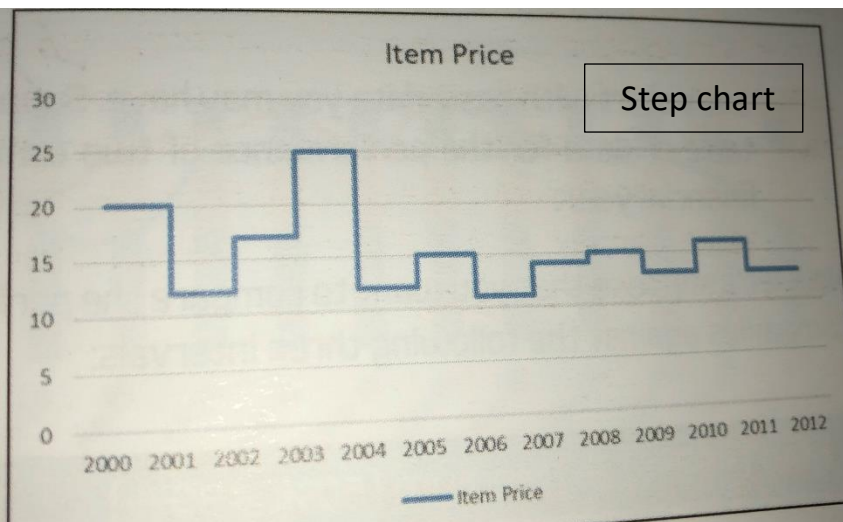


Waterfall chart



Item Price

Step chart



- Pie Chart
- Flowchart
- Word cloud
- Dashboard



BD-Optical Disk	Blue-Ray Optical Disc, stores large amounts of data, specifically high-definition videos
Magnetic Storage	A storage method that stores the data in the form of magnetized dots
Floppy Disc	An older storage device that holds up to 1.44 MB of data
Flash Drive	A pen drive memory unit, data stick, keychain drive, etc.
Memory Card (SD - Secure Digital)	A flash memory card that is used to store images, videos, and other digital data
Cloud Storage	Data storage on internet servers
Google Drive	Cloud storage service provided by Google, provides the users with the ability to share files online with anyone at any time
Dropbox	Cloud storage service provided by Dropbox, synchronizing the contents with the Dropbox server and other devices of the user
OneDrive	Online cloud storage service provided by Microsoft; allows you to store files in the cloud and access and share them anytime, anywhere

## Categories of networks

Computer networks are categorized by purpose and size, where the size is determined by the number of computers and the geographic area covered.

Full backup	Popular backup type which involves backing up all selected files and folders that are important to the user
File history	Regular or scheduled backup of data from your PC to a storage device
Incremental backup	Backup of all changes that have been made since the last backup
Differential backup	Data backup procedure that records the data changes that have occurred since the last full backup

ASCII	American Standard Code for Information Interchange.
Protocol	The rules or process that specify what is communicated and how it is communicated; acts like a translator
Simplex	Sender transmits the data; the other device acts as a receiver only
Half-duplex	Each device can transmit and receive the information, but not at the same time
Full-duplex	The sender and receiver devices can transmit and receive the information, simultaneously
Jitter	The variance in the arrival time of the data packets in milliseconds (ms) over a communication network

Authorized user	A person who possesses the authority to perform an action or set of activities.
Unauthorized user	A person who does not possess the authority to perform an action or set of activities.
Unauthorized disclosure	Exposure of information to user(s) not authorized to access the information.
Unauthorized modification	Modification of information by user(s) not authorized to modify the information.

OTP	One-Time Password.
MAC	Mandatory Access Control
DAC	Discretionary Access Control

Diagram	A visual illustration of a group of concepts and the relationships between them
Visualization technique	A method to represent data considering the purpose of the visualization
Word cloud	A group of words of different sizes placed together into a cloud shape
Tree diagram	A visualization technique that has a start, root, or parent node, with branches emanating from it.
Flowchart	A visualization technique to represent algorithms and processes
Venn diagram	Sets of entities; each set is drawn within a circle



### 6 - Dropbox

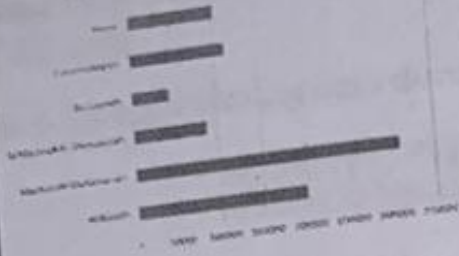
The Dropbox company offers a file hosting service that creates a folder (Dropbox) on user's computer while synchronizing the contents with the Dropbox server and the user's other devices, thus keeping the files updated. A Dropbox basic account is free with 2GB of storage space.

Diagramming purpose	Example of diagramming technique
Demonstrate a process: show the steps to accomplish a task	Flowchart
Brainstorm: create, include, and comprehend ideas about a topic	Mind map
Identify defects: analyze the causes of a problem to correct the defect	Fishbone diagram
Demonstrate relationships: show the connections between concepts or people	Tree diagram
Compare: show similarities and differences between two or more concepts	Venn diagram



### Bar

Population (15 years and above) year 2017



### Bullet



### Heat map



### Pie chart

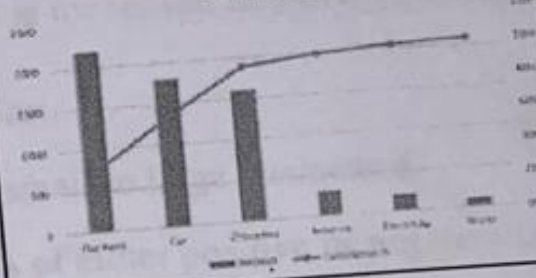
Population who currently smoke



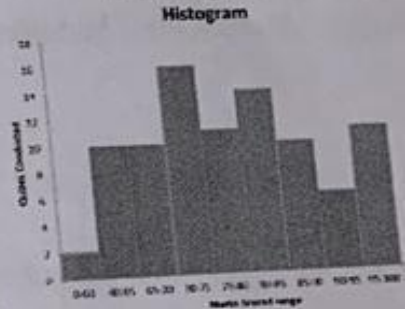
- Al Riyadh
- Al Madinah Al Munawwarah
- Eastern Region
- Makkah Al Munkarramah
- Al Qassim
- Bahar

### Pareto chart

Monthly Expenses

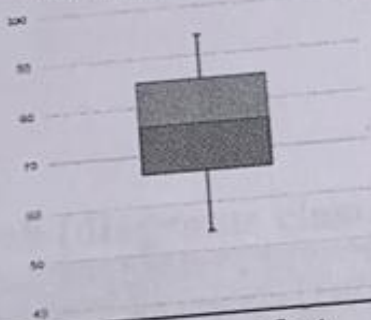


### Histogram



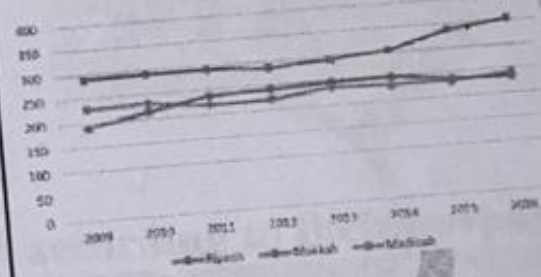
### Boxplot

Annual rainfall rate in mm in Saudi Arabia



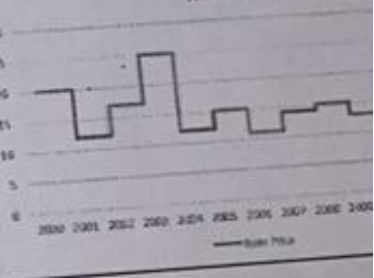
### Line chart

Water Consumption



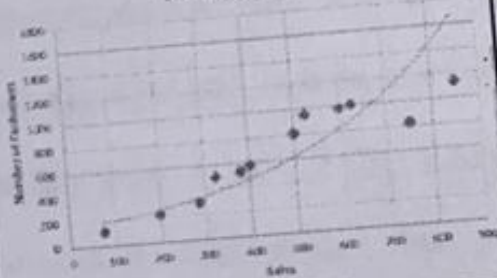
### Step chart

Item Price



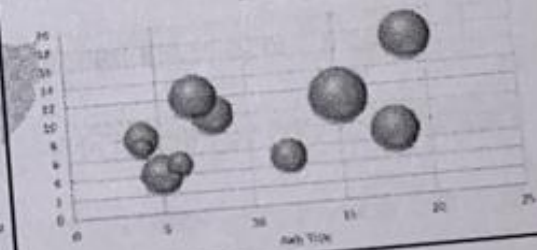
### Scatter plot

Scatter Plot chart



### Bubble chart

Chart Title





## Summary of charts (Numeric)?

**Bar chart**

represents **categorical** data with bars with height or length proportional to the values.  
shows comparisons among discrete categories.

**Bullet chart**

a single measure, which compares to one or more measures, and displays it in the context of qualitative ranges of performance.  
like a thermometer

**Heat map**

displays values in a matrix and represents them as colors.  
**High** values are represented with dark colors;  
the **intensity** of colors represents **values** of data tables.  
Used to show weather or real estate data

**Pie chart**

a **circular** statistical graphic that is divided into slices  
widely used in the business world and the mass media  
best used for making part-to-whole comparisons

**Pareto chart**

contains **both** bars and a line graph.  
The **vertical** bar represents the frequency of individual values and the **line** represents a cumulative total.  
useful for analyzing what problems need attention first.

**Histogram**

accurate distribution of continuous data.  
**resembles** a bar chart but it actually differs from it  
data values are distributed into **bins**, which are represented as columns.

**Boxplot**

understand the outliers in the data  
a graphical display of **five** statistics  
(the **minimum**, **lower quartile**, **median**, **upper quartile**, and **maximum**)

**Line chart**

displays information as a series of data points connected by a straight line.  
used to show **time series** relationships with **continuous** data.  
used to visualize data that **changes over time**.

**Step chart**

display **changes** that occur at irregular intervals.  
**extended** version of a line chart, but it does not use the shortest distance to connect two data points; it  
**vertical and horizontal** lines to connect

**Scatter plot (XY plot)**

displays values for two variables for a set of data.  
uses a **collection of points** placed using Cartesian coordinates  
best used for correlation of large amount of data

**Bubble chart**

displays three dimensions (3D) of data (x-axis data, y-axis data, and the size of bubble).  
like a scatter plot with the exception of the **third** variable